



## Industrial Signalling - Ex & Off-shore



### **AirSea Technology ApS**

Moesgaardvej 14  
8270 Hojbjerg  
Denmark

Ph. +45 5370 7475  
[info@airseatech.dk](mailto:info@airseatech.dk)  
[www.airseatech.dk](http://www.airseatech.dk)

**AirSea Technology ApS** is a leading supplier of high quality signalling, alarm, and warning devices, trusted worldwide. With more than *25 years of industry experience*, we deliver reliable and innovative signalling solutions designed to perform in demanding environments.

Our extensive product portfolio includes **visual signalling devices, acoustic alarms, and combined visual/acoustic solutions**, providing clear and effective warnings wherever safety and reliability are critical.

AirSea products are engineered for use across a wide range of applications and industries, including:

- Industrial and manufacturing environments
- Process control and status indication
- Fire and security systems
- Explosive environments (EXD & IS)
- Obstruction marking
- Marine applications
- Safety and protection solutions

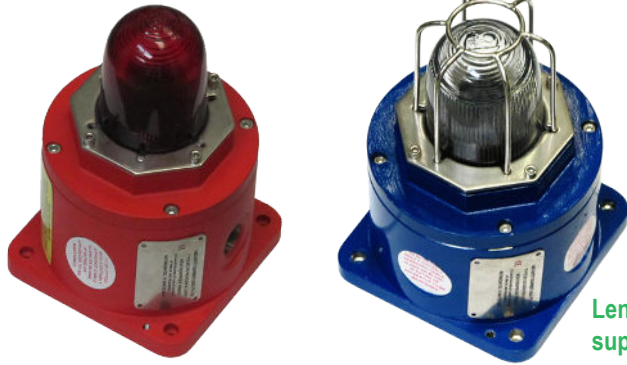
We serve a diverse customer base across sectors such as mining, manufacturing, and electrical and gas utilities. This broad reach reflects the versatility and dependability of AirSea solutions.

With our comprehensive product range, **AirSea Technology is ideally positioned to meet the growing demands of a safety conscious world**. Our products are readily available to support your projects without delay.

When standard solutions are not sufficient, our experienced technical team is ready to help. We can **modify existing products or develop customised solutions** tailored to your specific requirements, with all projects assessed on their commercial viability.

Our long standing commitment to **quality, service, and innovation** remains as strong today as it was more than two decades ago. This dedication continues to drive our passion and focus within the signalling and safety industry.

**Get in touch with us – we're here to help.**



## Visual Signals - Explosion Proof STAINLESS STEEL BEACON

Lens Guard not supplied as standard

### Explosion Proof Beacon > Stainless Steel AST.BC125 Series

#### Product overview

The BC125 range has been approved for use in potentially explosive atmospheres and very harsh environmental conditions.

Typical applications are Oil and Gas, On-shore and Offshore, Chemical, Petrochemical, Refineries & Marine locations etc.

These beacons have a choice of two types of light source: either Xenon (strobe) with multiple flash rate and power ratings or an LED array with three status type indication options and two power ratings. The design allows for termination inside the enclosure.

The units also have the ability to be fitted with a telephone initiation function and can be used as the second ring output indicator for telephones when installed in very noisy environments.

#### Features/Certifications

- Approved by ATEX, IECEx
- CQST (Available on request only)
- ATEX: Ex d IIC T4~ T6 Gb  
Ex tb IIIC T135°C~T85°C
- Zones 1, 2, 21 & 22
- Conforms to:  
EN 60079-0:2012 (IEC 60079-0:2011),  
EN-60079-1:2007 (IEC 60079-1:2007)  
EN 60079-31:2009 (IEC 60079-31:2008)
- 360° light output around the vertical axis
- Dustproof & Weatherproof

### BC125 Series > Ordering Information

	Lens Colour	Beacon Type	Power (Xenon)	Power (LED)	Voltage	Duty Label	Tag Label	Lens Guard	Cable Entry	Finish Colour	Telephone Initiated
BC125 +	A = Amber	X = Xenon	05 = 5J	05 = 5W	DC 12 - 48v	Y = Yes	Y = Yes	Y = Yes	A = M20	RD = Red	Y = Yes
	R = Red		10 = 10J	YW = Yellow							
	B = Blue		15 = 15J	BU = Blue							
	G = Green	L = LED	10 = 10W	AC 100 - 240v	N = No	N = No	N = No	B = M25	BL = Black	N = No	
	C = Clear		20 = 20J						OR = Other		
	O = Other										

Follow the chart (right) to generate your part code.

MODEL CONFIGURATOR (By using the table above, complete this box sequence to select your required beacon).

BC125											
Lens Colour	Beacon Type	Power (Xenon)	Power (LED)	Voltage	Duty Label	Tag Label	Lens Guard	Cable Entry	Finish Colour	Telephone Initiated	

Note: All customers orders will be confirmed in writing. Care should be taken that the correct code has been ordered as be-spoke manufactured products cannot be returned for exchange or credit later.

**Kg** 5.4

**°C** -40+70

**IP** 66

**INDUSTRIAL**

**MARINE**

**STAINLESS STEEL**

APPROVALS and CONFORMITIES



# Explosion Proof Beacon > Stainless Steel AST.BC125 Series

## General Information

EX CODE: Ex d IIC T4~T6 Gb, Ex tb IIIC T135°C~T85°C  
 CERTIFICATION: ATEX (Nemko 14 1011X), IECEx (NEM 14.0007X)  
 CQST (Available on request only)  
 TYPE: Xenon or LED Visual Beacon

Xenon Working Status		Xenon - Flashing			
Flash Rate		Selectable from 60-180 Flashes per Minute			
Power Rating	5 J (10W) Max	10 J (15W) Max	15 J (20W) Max	20 J (25W) Max	
Effective Candela	109	293	395	424	

LED Working Status		LED - Flashing / Rotating / Static	
Flash Rate		Selectable from 60-120 Flashes per Minute	
Rotation Rate		Selectable from 60-120 Revolutions per Minute	
Static Mode		Permanently ON (ie Steady)	
Power Rating	5 W	10 W	
Effective Candela	128	312	

### MULTIPLYING FACTOR FOR COLOURED LENSES:

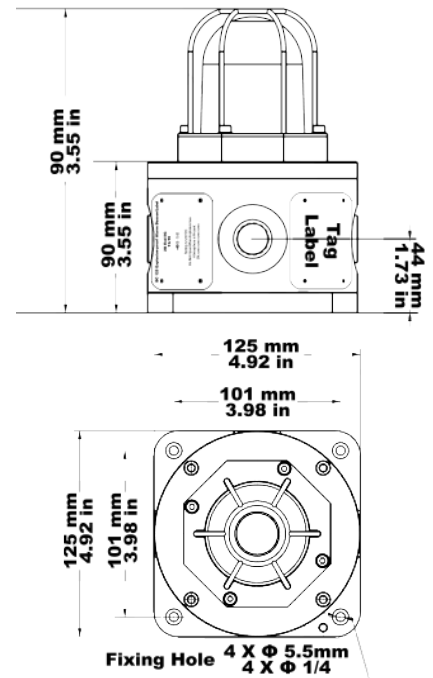
Amber x 0.51, Red x 0.15, Blue x 0.12, Green x 0.49, Clear x 1

### Mechanical Specifications

MATERIAL: Enclosure: Stainless Steel 316  
 Lens: Tempered Glass  
 LENS COLOURS: Amber, Red, Blue, Green, Clear or Other (specify)  
 ENCLOSURE COLOUR: Red (RAL3001), Yellow (RAL1003)  
 Blue (RAL5005), Black (RAL9004)  
 WEIGHT: 5.4 Kg / 11.9 lb  
 DIMENSIONS: Length/Width: 125mm / 4.92" Height: 181.2mm / 7.13"  
 INGRESS PROTECTION: IP 66  
 AMBIENT TEMPERATURE: -40 to +70  
 HUMIDITY: ≤ 95% RH

### Electrical Specifications

POWER SUPPLY: ≤48v Dc or 100-240v Ac (50/60 Hz), ≤25W  
 TERMINATION: Accepts upto ≤ 2.5mm<sup>2</sup> incorporating rising clamp protectors  
 CABLE ENTRY: 4 x M20 or M25.  
 For 1/2" or 3/4"NPT requirements, male/female adapter glands are available. Contact sales dept for further part codes.



## Accessories

- 50023: Cage Guard (Stainless Steel)
  - 50210: M20 E1EX Stainless Steel Gland (Multi Armour Cone) Atex Cat 2 & 3, EExde IIC 2 GD  
 Cable ID 11 - 15.5mm  
 OD 14.5 - 21mm  
 Gland for Multi Armoured Cable \*
  - 50211: M20 A2EX Stainless Steel Gland Atex Cat 2 & 3, EExde IIC 2 GD  
 Cable OD 11 - 15.5mm  
 Gland for Unarmoured Cable \*
  - 50212: M20 E1EX-QS Stainless Steel Gland (Ex d IIC, Ex e IIC, Ex nR IIC, Ex tb IIIC)  
 Cable OD 14.5 - 20.5mm  
 Barrier Gland for Steel and Aluminium Armoured Cable \*
  - 50213: M20 A2EX Quick Stop Stainless Steel Gland (Ex d IIC, Ex nR IIC, Ex tb IIC)  
 Cable OD 9 - 15mm  
 Barrier Gland for Unarmoured Cable \*
  - 50214: M20 Stainless Steel Stopping Plug Atex EExde I/IIC  
 Standard M20 Blanking Plug
  - 50221: Epoxy Minute Adhesive 24m/l tube  
 One tube sufficient for five barrier glands
- \* 15mm Thread length for Stainless Steel products
- Note: M25 options available for the above

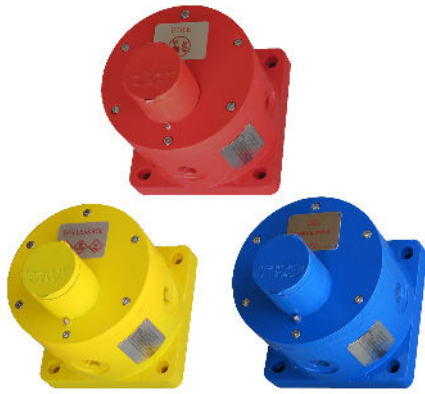
## AST.BC125 Series > Working Current

### Xenon

ENERGY	12v Dc	24v Dc	48v Dc	110v Ac	220v Ac
5 J	460 mA	280 mA	140 mA	60 mA	35 mA
10 J	850 mA	490 mA	250 mA	100 mA	60 mA
15 J	1200 mA	700 mA	360 mA	140 mA	80 mA
20 J	N/A	960 mA	480 mA	180 mA	110 mA

### LED

POWER	12v Dc	24v Dc	48v Dc	110v Ac	220v Ac
5 W	530 mA	260 mA	120 mA	80 mA	40 mA
10 W	1100 mA	530 mA	240 mA	160 mA	80 mA



## Manual Activation Control GRP PUSH BUTTON

### Explosion Proof Push Button > GRP AST.PB150 Series

#### Product overview

The PB150 push button range has been approved for use in potentially explosive atmospheres and harsh environmental conditions.

Typical applications are Oil and Gas, On-shore and Offshore, Chemical, Petrochemical, Refineries & Marine locations etc.

It is compatible for use with a PLC, DCS and ESD systems via 4-20mA output. It is ideally suited for use in fire alarm systems and an addressable option with diode fitted is available.

The unit has the option for either a key reset or self reset. The range also offers an additional visual LED indication option; red, green (or both) can be fitted. When fault or alarm status arises the green LED will be overridden by the red LED. The design allows for termination inside the unit.

#### Features/Certifications

- Approved by ATEX, IECEx
- CQST (Available on request only)
- ATEX: II 2G Exd IIC T4 - T6 (incorporating IIA & IIB)
- Zones 1, 2, 21 & 22
- Conforms to EN (IEC) 60079-0 EN (IEC) 60079-1 and EN54
- Dustproof & Weatherproof

### AST.PB150 Series > Ordering Information

Standard  
Product  
Selection

AST.PB150	+	Switch	Duty Label	Tag Label	Reset	LED Indicator	Features	Cable Entry	Finish Colour
		<b>S</b> = Single Switch	<b>Y</b> = Yes	<b>Y</b> = Yes	<b>S</b> = Self Reset	<b>L</b> = Red & Green <b>R</b> = Red	<b>F</b> = Lift Flap <b>R</b> = Resistor (specify)	<b>A</b> = M20	<b>RD</b> = Red <b>YW</b> = Yellow <b>BU</b> = Blue <b>BL</b> = Black <b>OR</b> = Other
		<b>D</b> = Double Switch	<b>N</b> = No	<b>N</b> = No	<b>K</b> = Key Reset	<b>G</b> = Green <b>N</b> = No LED	<b>D</b> = Diode (specify) <b>N</b> = No Features	<b>B</b> = M25	

Follow the chart (right) to generate your part code.

**MODEL CONFIGURATOR** (By using the table above, complete this box sequence to select your required push button).

AST.PB150	<input type="text"/>	<input type="text"/>	<input type="text"/>	<input type="text"/>	<input type="text"/>	<input type="text"/>	<input type="text"/>	<input type="text"/>
	Switch	Duty Label	Tag Label	Reset	LED Indicator	Features	Cable Entry	Finish Colour

Note: All customers orders will be confirmed in writing. Care should be taken that the correct code has been ordered as be-spoke manufactured products cannot be returned for exchange or credit later.

**Kg** 4.2

**°C** -40+70

**IP** 66

**INDUSTRIAL**

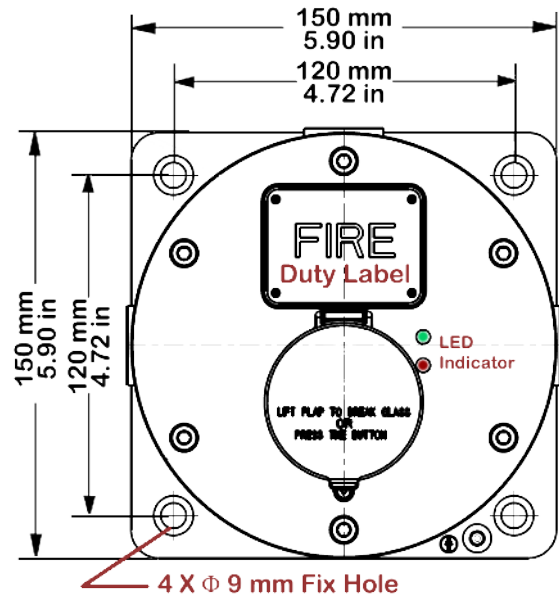
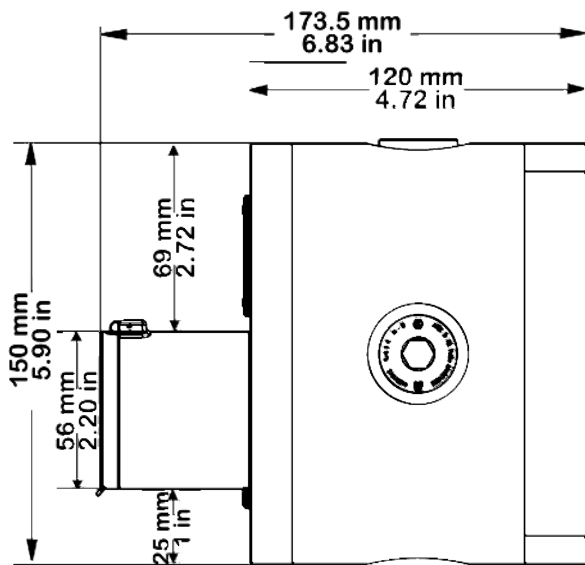
**MARINE**

**FIRE**

APPROVALS  
and  
CONFORMITIES



**GRP**



## Explosion Proof Push Button > GRP AST.PB150 Series

### General Information

EX CODE:	Exd IIC T4 - T6
CERTIFICATION:	ATEX (Nemko 14 5439X), IECEx (NEM 14.0013X) CQST (Available on request only)
TYPE:	Push Button

### Mechanical Specifications

MATERIAL: ENCLOSURE	Enclosure: GRP (Glass Reinforced Plastic)
COLOUR:	Red (RAL3001), Yellow (RAL1003)
AMBIENT TEMPERATURE:	Blue (RAL5005), Black (RAL9004)
TEMPERATURE:	-40 to +70
HUMIDITY:	≤ 95% RH
WEIGHT:	4.2 Kg / 9.26 lb
DIMENSIONS:	Width/Length: 150mm / 5.91" Height: 164mm / 6.46"
INGRESS PROTECTION:	IP 66

### Electrical

Specifications SWITCH RATING:	30v Dc: 6A (Resistive), 6A (Inductive) 250v Ac: 11A (Resistive), 6A (Inductive) On-Off Output (NC/NO)
OUTPUT:	Accepts upto ≤ 2.5mm <sup>2</sup> incorporating rising clamp protectors
TERMINATION: CABLE ENTRY:	4 x M20 or M25. For 1/2" or 3/4"NPT requirements, male/female adapter glands are available. Contact sales dept for further part codes.

### Accessories

- 50200: M20 E1EX Nickel Plated Brass Gland (Multi Armour Cone) Atex Cat 2 &3, EExde IIC 2 GD  
Cable ID 11 - 15.5mm  
OD 14.5 - 21mm  
Gland for Multi Armoured Cable \*
  - 50201: M20 A2EX Nickel Plated Brass Gland Atex Cat 2 & 3, EExde IIC 2 GD  
Cable OD 11 - 15.5mm  
Gland for Unarmoured Cable \*
  - 50202: M20 E1EX-QS Nickel Plated Brass Gland (Ex d IIC, Ex e IIC, Ex nR IIC, Ex tb IIIC)  
Cable OD 14.5 - 20.5mm  
Barrier Gland for Steel and Aluminium Armoured Cable \*
  - 50203: M20 A2EX Quick Stop Nickel Plated Brass Gland (Ex d IIC, Ex nR IIC, Ex tb IIC)  
Cable OD 9 - 15mm  
Barrier Gland for Unarmoured Cable \*
  - 50204: M20 Nickel Plated Brass Stopping Plug Atex EExde I/IIC  
Standard M20 Blanking Plug
  - 50221: Epoxy Minute Adhesive 24m/l tube  
One tube sufficient for five barrier glands \* 25mm  
Thread length for GRP products
- Note:** M25 options available for the above



SB125-4-P

## Audible & Visual Signals STAINLESS STEEL COMBINATION UNITS WITH ACTIVATION CONTROL

### Explosion Proof Sounder/Beacon > Stainless Steel AST.SB125-2, 3 & 4 Series

#### Product overview

The SB125-2, 3 & 4 combined sounder beacon range has been approved for use in potentially explosive atmospheres and very harsh environmental conditions.

Typical applications are Oil and Gas, On-shore and Offshore, Chemical, Petrochemical, Refineries & Marine locations etc.

The unit incorporates a three stage alarm option with 60 tones to choose from.

The units offer a combined audible & visual warning signal with the option of either a junction box, allowing extra space for ease of installation & final connections. This is particularly helpful if the unit is to be installed into a fire or telecom system where additional cabling is required to monitor external devices or a push button unit for manual activation.

The units are mounted on a heavy duty 316 stainless steel, pre-drilled, mounting plate & the units are pre-wired as standard, so that on the basic model a single input operates both units simultaneously.

#### Features/Certifications

- Approved by ATEX, IECEx
- CQST (Available on request only)
- ATEX: II 2G Exd IIC T4 - T6 (incorporating IIA & IIB)
- Zones 1, 2, 21 & 22
- Conforms to EN (IEC) 60079-0 EN (IEC) 60079-1 and EN54
- Dustproof & Weatherproof

### AST.SB125-2, 3 & 4 Series > Ordering Information

	Combination Type	Combined With (Optional)	Lens Colour	Beacon Type	Power (Xenon)	Power (LED)	Voltage	Duty Label	Tag Label	Lens Guard	Cable Entry	Finish Colour	Telephone Initiated
AST.SB125 +  Follow the chart (right) to generate your part code.	2 = 1xS, 1xB	J = Junction Box	A = Amber R = Red	X = Xenon	02 = 2J 05 = 5J	05 = 5W	DC 12 ~ 48v	Y = Yes	Y = Yes	Y = Yes	A = M20	RD = Red YW = Yellow	Y = Yes
	3 = 1xS, 2xB	P = Push Button	B = Blue G = Green C = Clear	L = LED	10 = 10J 15 = 15J 20 = 20J	10 = 10W	AC 100-240v	N = No	N = No	N = No	B = M25	BU = Blue BL = Black OR = Other	N = No
	4 = 1xS, 3xB												

Note: S= Sounder, B= Beacon

**MODEL CONFIGURATOR** (By using the table above, complete this box sequence to select your required junction box)

SB125													
Combination Type	Combined With	Lens Colour	Beacon Type	Power (Xenon)	Power (LED)	Voltage	Duty Label	Tag Label	Lens Guard	Cable Entry	Finish Colour	Telephone Initiated	

Note: All customers orders will be confirmed in writing. Care should be taken that the correct code has been ordered as be-spoke manufactured products cannot be returned for exchange or credit later.

<b>Kg</b> 11.9 SB125-2 16.7 SB125-3 22.0 SB125-4	<b>°C</b> -40+70	<b>IP 66</b>	<b>INDUSTRIAL</b>	<b>MARINE</b>	<b>FIRE</b>
<b>APPROVALS and CONFORMITIES</b>	<b>RoHS</b>	<b>ATEX</b>	<b>IEC</b>	<b>IECEx</b>	<b>STAINLESS STEEL</b>

# Explosion Proof Sounder/Beacon >

## Stainless Steel AST.SB125-2, 3 & 4 Series

### General Information

EX CODE:	Ex d IIC T4~ T6 Gb, Ex tb IIIC T135°C~T85°C
CERTIFICATION:	ATEX (Nemko 14 1010X), IECEx (NEM 14.0006X) CQST (Available on request only)
TYPE:	Xenon or LED Audible and Visual Signal Warning Device
SOUNDER:	3 Stage alarm with 60 Selectable tones
POWER RATING:	5-20 Watts Adjustable
SOUND OUTPUT:	Up to 111 dB at 1 metre (+/- 3 dB) *

Xenon Working Status		Xenon - Flashing			
Flash Rate		Selectable from 60-180 Flashes per Minute			
Power Rating	2.5 J (4W) Max	5 J (10W) Max	10 J (15W) Max	15 J (20W) Max	20 J (25W) Max
Effective Candela	67	109	293	395	424

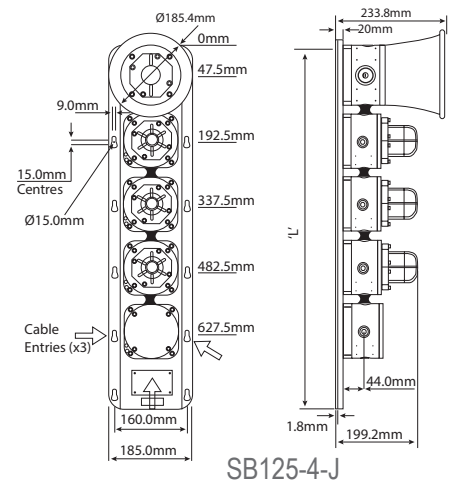
LED Working Status		LED - Flashing / Rotating / Static	
Flash Rate		Selectable from 60-120 Flashes per Minute	
Rotation Rate		Selectable from 60-120 Revolutions per Minute	
Static Mode		Permanently ON (ie Steady)	
Power Rating	5 W	10 W	
Effective Candela	128	312	

#### MULTIPLYING FACTOR FOR COLOURED LENSES:

Amber x 0.51, Red x 0.15, Blue x 0.12, Green x 0.49, Clear x 1

#### Mechanical Specifications

MATERIAL:	Enclosure & Bracket: Stainless Steel 316 Lens: Tempered Glass
LENS COLOURS:	Amber, Red, Blue, Green, Clear or Other (specify)
ENCLOSURE COLOUR:	Red (RAL3001), Yellow (RAL1003) Blue (RAL5005), Black (RAL9004)
AMBIENT TEMPERATURE:	-40 to +70
HUMIDITY:	≤ 95% RH
WEIGHT:	SB125-2: 11.9 Kg / 26.2 lb, SB125-3: 16.7 Kg / 37 lb SB125-4: 22 Kg / 49 lb
DIMENSIONS:	See outline drawings and table for dimensions.
INGRESS PROTECTION:	IP 66
<b>Electrical Specifications</b>	
POWER SUPPLY:	≤48v Dc or 100-240v Ac (50/60 Hz), Beacon: ≤25W, Sounder: ≤20W
TERMINATION:	Accepts upto ≤ 2.5mm <sup>2</sup> incorporating rising clamp protectors
CABLE ENTRY:	2 x M20 or M25. For 1/2" or 3/4"NPT requirements, male female adapter glands are available. Contact sales dept for further part codes.
CURRENT CONSUMPTION:	Sounder 250 mA - 1500 mA (Adjustable by tone selection)



SB125-4-J

Combination	No Key Slots	'L'
SB125-2	6	400.0
SB125-3 (2J or P)	8	545.0
SB125-4 (3J or P)	8	690.0
SB125-5 (4J or P)	10	835.0

### Accessories

50023:	Cage Guard (Stainless Steel)
50210:	M20 E1EX Stainless Steel Gland (Multi Armour Cone) Atex Cat 2 & 3, EExde IIC 2 GD Cable ID 11 - 15.5mm OD 14.5 - 21mm Gland for Multi Armoured Cable *
50211:	M20 A2EX Stainless Steel Gland Atex Cat 2 & 3, EExde IIC 2 GD Cable OD 11 - 15.5mm Gland for Unarmoured Cable *
50212:	M20 E1EX-QS Stainless Steel Gland (Ex d IIC, Ex e IIC, Ex nR IIC, Ex tb IIIC) Cable OD 14.5 - 20.5mm Barrier Gland for Steel and Aluminium Armoured Cable *
50213:	M20 A2EX Quick Stop Stainless Steel Gland (Ex d IIC, Ex nR IIC, Ex tb IIC) Cable OD 9 - 15mm Barrier Gland for Unarmoured Cable *
50214:	M20 Stainless Steel Stopping Plug Atex EExde I/IIC Standard M20 Blanking Plug
50221:	Epoxy Minute Adhesive 24m/l tube One tube sufficient for five barrier glands
* 15mm	Thread length for Stainless Steel products
Note:	M25 options available for the above

## AST.SB125-2, 3 & 4 Series > Working Current

Power Consumption: Sounder: 5-20W & LED: 5W

Xenon	2.5 Joule	5 Joule	10 Joule	15 Joule	20 Joule
	4 W (Max)	10 W (Max)	15 W (Max)	20 W (Max)	25 W (Max)

Working Current: Sounder: 250 mA - 1500 mA & LED: 220 mA (Max)

Xenon	2.5 Joule	5 Joule	10 Joule	15 Joule	20 Joule
	160 mA	320 mA	650 mA	1A (Max)	1.4A (Max)

### LED

POWER	12v Dc	24v Dc	48v Dc	110v Ac	220v Ac
5 W	530 mA	260 mA	120 mA	80 mA	40 mA
10 W	1100 mA	530 mA	240 mA	160 mA	80 mA



## Audible Signals - Explosion Proof GRP SOUNDER

### Explosion Proof Sounder > GRP AST.SD150 Series

#### Product overview

The SD150 electronic sounder range has been approved for use in potentially explosive atmospheres and very harsh environmental conditions.

Typical applications are Oil and Gas, On-shore and Offshore, Chemical, Petrochemical, Refineries & Marine locations etc.

The unit incorporates a three stage alarm option with 60 tones to choose from.

All tones can be pre-set during installation.

The units also have the ability to be fitted with a telephone initiation function and can be used as the second ring output indicator for telephones when installed in very noisy environments.

The design allows for termination inside the enclosure.

The sounder is supplied with a mounting bracket as standard.

#### Features/Certifications

- Approved by ATEX, IECEx
- CQST (Available on request only)
- ATEX: Ex d IIC T4~ T6 Gb, Ex tb IIIC T135°C~T85°C
- Zones 1, 2, 21 & 22
- Conforms to: EN 60079-0:2012 (IEC 60079-0:2011), EN-60079-1:2007 (IEC 60079-1:2007) EN 60079-31:2009 (IEC 60079-31:2008)
- Volume control
- Dustproof & Weatherproof

### AST.SD150 Series > Ordering Information

Standard Product Selection

AST.SD150 +

Voltage	Duty Label	Tag Label	Cable Entry	Finish Colour	Telephone Initiated
<b>DC</b> 12 - 48v	<b>Y</b> = Yes	<b>Y</b> = Yes	<b>A</b> = M20	<b>RD</b> = Red <b>YW</b> = Yellow <b>BU</b> = Blue	<b>Y</b> = Yes
<b>AC</b> 100 - 240v	<b>N</b> = No	<b>N</b> = No	<b>B</b> = M25	<b>BL</b> = Black <b>OR</b> = Other	<b>N</b> = No

Follow the chart (right) to generate your part code.

**MODEL CONFIGURATOR** (By using the table above, complete this box sequence to select your required sounder).

AST.SD150	<input type="text"/>	<input type="text"/>	<input type="text"/>	<input type="text"/>	<input type="text"/>	<input type="text"/>
	Voltage	Duty Label	Tag Label	Cable Entry	Finish Colour	Telephone Initiated

**Kg** 5.4

**°C** -40+70

**IP** 66

**dB** 113\*

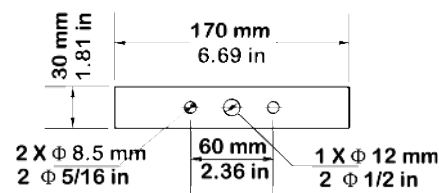
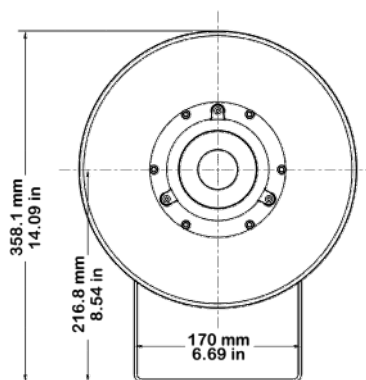
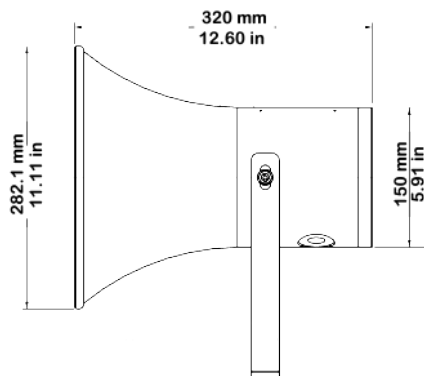
**MARINE**

**INDUSTRIAL**

APPROVALS and CONFORMITIES



**GRP**



## Explosion Proof Sounder > GRP AST.SD150 Series

### General Information

EX CODE:	Ex d IIC T4~ T6 Gb, Ex tb IIIC T135°C~T85°C
CERTIFICATION:	ATEX (Nemko 14 1009X), IECEx (NEM14.0005X) CQST (Available on request only)
TYPE:	Electronic Sounder
SOUNDER:	3 Stage alarm with 60 Selectable tones
POWER RATING:	5-20 Watts Adjustable
SOUND OUTPUT:	Up to 113 dB at 1 metre (+/- 3 dB) *
AMBIENT TEMPERATURE:	-40 to +70
HUMIDITY:	≤ 95% RH

### Mechanical Specifications

MATERIAL:	Enclosure: GRP (Glass Reinforced Plastic) & Bracket: Stainless Steel 316
ENCLOSURE COLOUR:	Red (RAL3001), Yellow (RAL1003) Blue (RAL5005), Black (RAL9004)
WEIGHT:	5.4 Kg / 11.9 lb
DIMENSIONS:	Length: 320mm / 12.7" See outline drawing for other dimensions
INGRESS PROTECTION:	IP 66
<b>Electrical Specifications</b>	
POWER SUPPLY:	≤48v Dc or 100-240v Ac (50/60 Hz), ≤20W
TERMINATION:	Accepts upto ≤ 2.5mm <sup>2</sup> incorporating rising clamp protectors
CABLE ENTRY:	2 x M20 or M25. For 1/2" or 3/4"NPT requirements, male/female adapter glands are available. Contact sales dept for further part codes.
CURRENT CONSUMPTION:	Sounder 250 mA - 1500 mA (Adjustable by tone selection)

### Accessories

50200:	M20 E1EX Nickel Plated Brass Gland (Multi Armour Cone) Atex Cat 2 & 3, EExde IIC 2 GD Cable ID 11 - 15.5mm OD 14.5 - 21mm Gland for Multi Armoured Cable *
50201:	M20 A2EX Nickel Plated Brass Gland Atex Cat 2 & 3, EExde IIC 2 GD Cable OD 11 - 15.5mm Gland for Unarmoured Cable *
50202:	M20 E1EX-QS Nickel Plated Brass Gland (Ex d IIC, Ex e IIC, Ex nR IIC, Ex tb IIIC) Cable OD 14.5 - 20.5mm Barrier Gland for Steel and Aluminium Armoured Cable *
50203:	M20 A2EX Quick Stop Nickel Plated Brass Gland (Ex d IIC, Ex nR IIC, Ex tb IIC) Cable OD 9 - 15mm Barrier Gland for Unarmoured Cable *
50204:	M20 Nickel Plated Brass Stopping Plug Atex EExde I/IIC Standard M20 Blanking Plug
50221:	Epoxy Minute Adhesive 24m/l tube One tube sufficient for five barrier glands

\* 25mm Thread length for GRP products

Note: M25 options available for the above

## AST.SD150 Series > Working Current

12v Dc	24v Dc	48v Dc	110v Ac	220v Ac
910 mA (Max 10W)	960 mA	500 mA	210 mA	100 mA



# Visual Signals GRP COMBINATION UNITS WITH ACTIVATION CONTROL



SL150-4-J

## Explosion Proof Status Lights > GRP SL150 Series

### Product overview

The SL150 status light range has been approved for use in potentially explosive atmospheres and very harsh environmental conditions.

Typical applications are Oil and Gas, On-shore and Offshore, Chemical, Petrochemical, Refineries & Marine locations etc.

The units offer a visual warning signal with the option of either a junction box, allowing extra space for ease of installation & final connections. This is particularly helpful if the unit is to be installed into a fire or telecom system where additional cabling is required to monitor external devices or a push button unit for manual activation.

The units are mounted on a heavy duty 316 stainless steel, pre-drilled, mounting plate & the units are pre-wired as standard.

### Features/Certifications

- Approved by ATEX, IECEx
- CQST (Available on request only)
- ATEX: II 2G Exd IIC T4 - T6 (incorporating IIA & IIB )
- Zones 1, 2, 21 & 22
- Conforms to EN (IEC) 60079-0 EN (IEC) 60079-1 and EN54
- Dustproof & Weatherproof

## SL150 Series > Ordering Information

	Combination Type	Combined With (Optional)	Lens Colour	Beacon Type	Power (Xenon)	Power (LED)	Voltage	Duty Label	Tag Label	Lens Guard	Cable Entry	Finish Colour	Telephone Initiated
SL150 +	2 = 2xB	J = Junction Box	A = Amber	X = Xenon	02 = 2J	05 = 5W	DC 12 ~ 48v	Y = Yes	Y = Yes	Y = Yes	A = M20	RD = Red	Y = Yes
	3 = 3xB		R = Red		10 = 10J							YW = Yellow	
	4 = 4xB		B = Blue		15 = 15J							BU = Blue	
	5 = 5xB *	P = Push Button	G = Green	L = LED	10 = 10W	AC 100-240v	N = No	N = No	N = No	B = M25	BL = Black	N = No	
			C = Clear		20 = 20J						OR = Other		

Follow the chart (right) to generate your part code.

Note: S= Sounder, B= Beacon  
\* Combination Type 5: J or P additions not available with this selection.

MODEL CONFIGURATOR (By using the table above, complete this box sequence to select your required junction box)

SL150													
Combination Type	Combined With	Lens Colour	Beacon Type	Power (Xenon)	Power (LED)	Voltage	Duty Label	Tag Label	Lens Guard	Cable Entry	Finish Colour	Telephone Initiated	

Note: All customers orders will be confirmed in writing. Care should be taken that the correct code has been ordered as be-spoke manufactured products cannot be returned for exchange or credit later.

<b>Kg</b> 8.9 2 17.4 4 13.1 3 21.6 5	<b>°C</b> -40+70	<b>IP</b> 66	<b>INDUSTRIAL</b>	<b>MARINE</b>	<b>FIRE</b>
---	------------------	--------------	-------------------	---------------	-------------

APPROVALS and CONFORMITIES

**GRP**

# Explosion Proof Status Lights > GRP

## SL150 Series

### General Information

EX CODE: Ex d IIC T4~ T6 Gb, Ex tb IIIC T135°C~T85°C  
 CERTIFICATION: ATEX and IECEx  
 CQST (Available on request only)  
 TYPE: Xenon or LED Visual Signal Warning Device

Xenon Working Status		Xenon - Flashing			
Flash Rate		Selectable from 60-180 Flashes per Minute			
Power Rating	2.5 J (4W) Max	5 J (10W) Max	10 J (15W) Max	15 J (20W) Max	20 J (25W) Max
Effective Candela	67	109	293	395	424

LED Working Status	LED - Flashing / Rotating / Static	
Flash Rate	Selectable from 60-120 Flashes per Minute	
Rotation Rate	Selectable from 60-120 Revolutions per Minute	
Static Mode	Permanently ON (ie Steady)	
Power Rating	5 W	10 W
Effective Candela	128	312

### MULTIPLYING FACTOR FOR COLOURED LENSES:

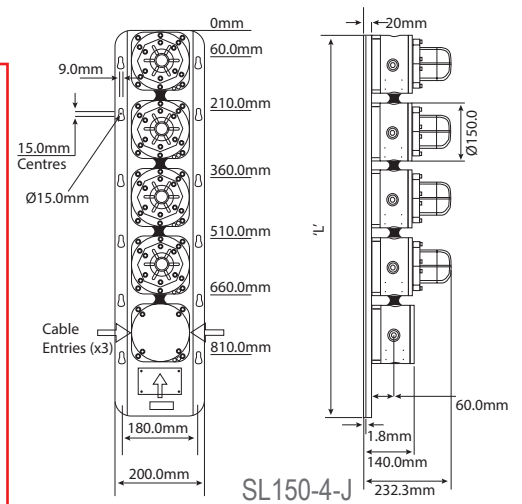
Amber x 0.51, Red x 0.15, Blue x 0.12, Green x 0.49, Clear x 1

### Mechanical Specifications

MATERIAL: Enclosure: GRP (Glass Reinforced Plastic) with 316 Stainless Steel Mounting Bracket  
 LENS COLOURS: Amber, Red, Blue, Green, Clear or Other (specify)  
 ENCLOSURE COLOUR: Red (RAL3001), Yellow (RAL1003)  
 Blue (RAL5005), Black (RAL9004)  
 AMBIENT TEMPERATURE: -40 to +70  
 HUMIDITY: ≤ 95% RH  
 WEIGHT: SL150-A: 8.9 Kg / 19.6 lb, SL150-B: 13.1 Kg / 28.9 lb  
 SL150-C: 17.4 Kg / 38.3 lb, SL150-D: 21.6 Kg / 47.6 lb  
 DIMENSIONS: See outline drawings and table for dimensions.  
 INGRESS PROTECTION: IP 66

### Electrical Specifications

POWER SUPPLY: ≤48v Dc or 100-240v Ac (50/60 Hz), Beacon: ≤25W,  
 TERMINATION: Accepts upto ≤ 2.5mm<sup>2</sup> incorporating rising clamp protectors  
 CABLE ENTRY: 2 x M20 or M25.  
 For 1/2" or 3/4"NPT requirements, male female adapter glands are available. Contact sales dept for further part codes.  
 CURRENT CONSUMPTION: Sounder 250 mA - 1500 mA (Adjustable by tone selection)



Combination	No Key Slots	'L'
SL150-2	6	450.0
SL150-3 (-2J or P)	8	619.0
SL150-4 (-3J or P)	10	788.0
SL150-5 (-4J or P)	12	957.0

### Accessories

- 50023: Cage Guard (Stainless Steel)
- 50200: M20 E1EX Nickel Plated Brass Gland (Multi Armour Cone) Atex Cat 2 & 3, EExde IIC 2 GD  
Cable ID 11 - 15.5mm  
OD 14.5 - 21mm  
Gland for Multi Armoured Cable \*
- 50201: M20 A2EX Nickel Plated Brass Gland Atex Cat 2 & 3, EExde IIC 2 GD  
Cable OD 11 - 15.5mm  
Gland for Unarmoured Cable \*
- 50202: M20 E1EX-QS Nickel Plated Brass Gland (Ex d IIC, Ex e IIC, Ex nR IIC, Ex tb IIIC)  
Cable OD 14.5 - 20.5mm  
Barrier Gland for Steel and Aluminium Armoured Cable \*
- 50203: M20 A2EX Quick Stop Nickel Plated Brass Gland (Ex d IIC, Ex nR IIC, Ex tb IIC)  
Cable OD 9 - 15mm  
Barrier Gland for Unarmoured Cable \*
- 50204: M20 Nickel Plated Brass Stopping Plug Atex EExde I/IIC  
Standard M20 Blanking Plug
- 50221: Epoxy Minute Adhesive 24m/l tube  
One tube sufficient for five barrier glands

\* 25mm Thread length for GRP products  
 Note: M25 options available for the above

## SL150 Series > Working Current

Power Consumption: Sounder: 5-20W & LED: 5W

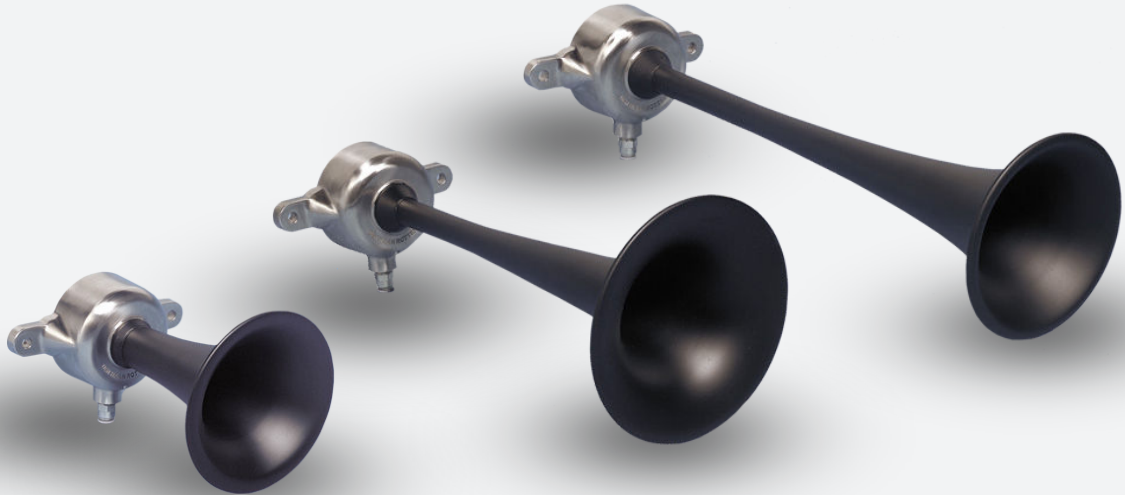
Xenon	2.5 Joule	5 Joule	10 Joule	15 Joule	20 Joule
	4 W (Max)	10 W (Max)	15 W (Max)	20 W (Max)	25 W (Max)

Working Current: Sounder: 250 mA - 1500 mA & LED: 220 mA (Max)

Xenon	2.5 Joule	5 Joule	10 Joule	15 Joule	20 Joule
	160 mA	320 mA	650 mA	1A (Max)	1.4A (Max)

### LED

POWER	12v Dc	24v Dc	48v Dc	110v Ac	220v Ac
5 W	530 mA	260 mA	120 mA	80 mA	40 mA
10 W	1100 mA	530 mA	240 mA	160 mA	80 mA



## Overview ACOUSTIC SIGNALS - HAZARDOUS AREA - PNEUMATIC AIR DRIVEN HORNS

The TDE Ex Series is a pneumatic (Non-electrical) device that needs to be powered via a compressed air supply. Designed for industrial and marine hazardous environments and approved for explosive atmospheres in Group II (Above Ground) applications. Designed to meet strict safety standards, it provides an acoustic warning where traditional non-electrical air-horns cannot be used safely.

Fully certified for areas with flammable gases, dust, or vapours, the TDE Ex Series ensures safety and compliance with international standards. Its Group II approval suits for above-ground industrial/marine sectors like oil, gas, and chemical plants.





The units produce the classic 'Foghorn' sound, delivering a very high sound and very low frequency output, making it ideal for signalling across medium to large areas. The length of the trumpet will dictate the wavelength of the sound waves produced, and therefore, the frequency of the note produced. In general, the lower the frequency of the note produced, the further the sound will travel.

## Features

- Continuously rated
- Suitable for wall or pole mounting
- Robust construction
- Easy installation & Maintenance friendly
- Very high sound output
- Very low frequency tone
- Designed for wide area signalling applications
- Group II (Above Ground)
- Zone: Gas 1, 2 & Dust 21, 22

## Material

- Brass horn with mat black finish
- Stainless steel 316 membrane housing

-  IP66
-  Up to 138dB (A) @ 1m
-  Continuous
-  ATEX & IECEx
-  >95% at 40°C (Humidity)
-  -30 to +70°C (Ambient)

## APPROVALS & CONFORMITIES



## Ordering Information

Ordering Information		Additional Technical Information			
Model	Product Code	Air Pressure	Air Consumption	Frequency	Sound Level
AST.TDE 198 EX	AST.TDE198EX	2-10 bar	2 to 3.5 l/s*	660Hz	116-138 dB(A)
AST.TDE 360 EX	AST.TDE360EX	1.5-10 bar	1.5 to 3.5 l/s*	377Hz	116-132 dB(A)
AST.TDE 450 EX	AST.TDE450EX	1.5-10 bar	1.5 to 3.5 l/s*	307Hz	116-132 dB(A)

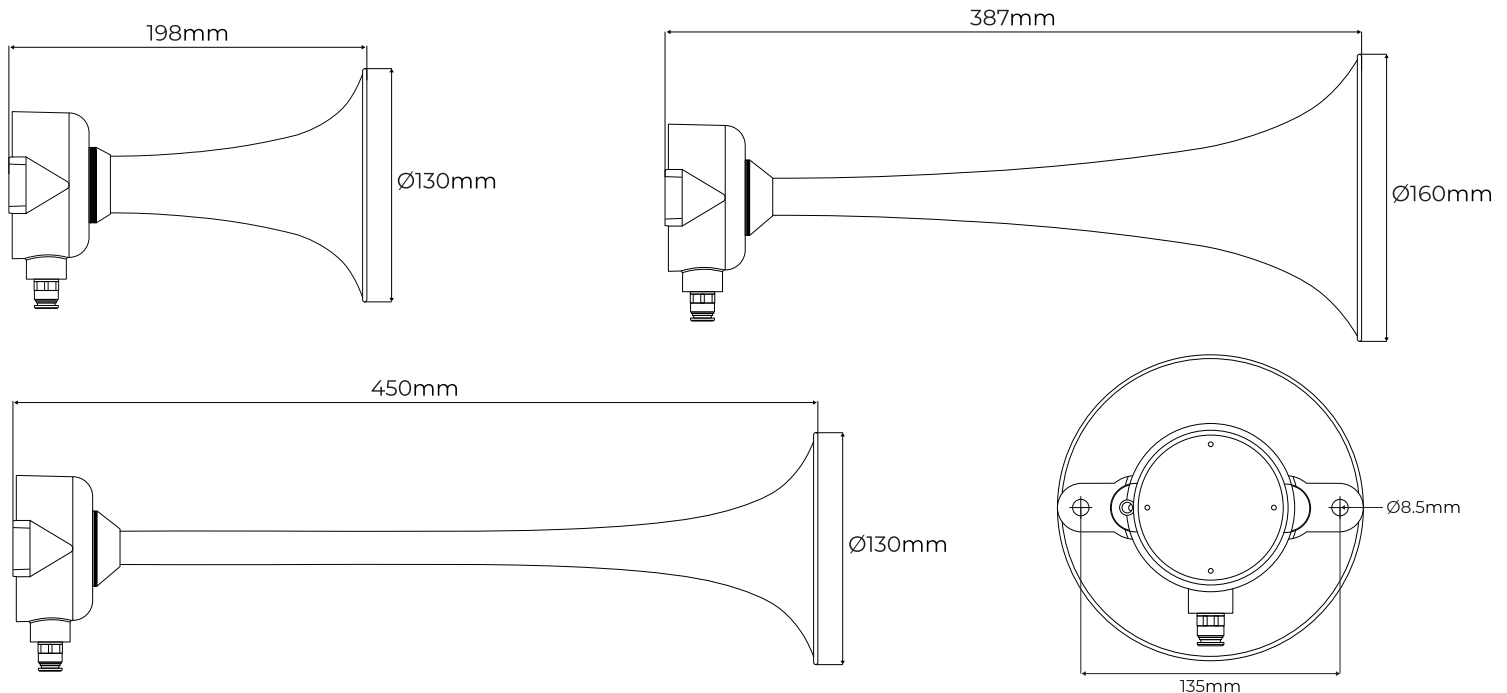
\*l/s : Litres Per Second

## Certification Information

Certification   Approvals for Hazardous Area		
Certificates	• ERO24ATEX0013X (ATEX), EMT 24.0008X (IECEX)	
Groups	• Group II : Above Ground	
EX Codes	• II 2G Ex h IIB + H <sub>2</sub> T6 Gb • II 2D Ex h IIIC T85°C Db	
Standards	• IEC 60079-0:2018	• ISO 80079-36:2016 • ISO 80079-37:2016
Zones	• Gas Zone : 1 & 2	• Dust Zone : 21 & 22

## Weights & Dimensional Drawings

Kg	AST.TDE 198 Ex	AST.TDE 360 Ex	AST.TDE 450 Ex
Net Weight	1.160	1.420	1.390
Gross Weight	1.335	1.900	1.880



## APPROVALS & CONFORMITIES





**For more information**

**Contact us for**



**AirSea Technology ApS**

**Moesgaardvej 14 • 8270 Hojbjerg • Denmark •**

**Ph. +45 5370 7475 • [info@airseatech.dk](mailto:info@airseatech.dk)**

**[www.airseatech.dk](http://www.airseatech.dk)**