



Heliport Lighting



AirSeaTechnology ApS

Moesgaardvej 14
8270 Hojbjerg
Denmark

Ph. +45 5370 7475
info@airseatech.dk
www.airseatech.dk

With more than 25 years of experience, the team behind AirSea Technology delivers high end equipment and world class service to airports, heliports, high rise buildings, wind turbine farms, and waterways.

Our deep industry knowledge and hands on expertise ensure that every customer receives reliable solutions tailored to the most demanding environments.

We take pride in offering state of the art products that not only meet the highest international standards but also prioritize environmental responsibility.

Our portfolio is built on strong partnerships with leading global manufacturers known for their uncompromising quality and innovative engineering.

At AirSea Technology, exceptional service and support are at the core of everything we do.

From installation and maintenance to long term operational reliability, we are committed to keeping your critical infrastructure running safely and efficiently.

If your Heliport is missing essential equipment, we are ready to assist.

Get in touch with us – we're here to help.



TABLE OF CONTENTS

Heliport Inset Light	2
Heliport Shallow Base	4
Heliport Adapterrings	6
Heliport Elevated Light	8
Heliport H-Marking Li	10
Heliport TDPC Light	12
Heliport Portable Light	14
Heliport Flood Light	19
Heliport Beacon morse H.	21
Heliport Wind Direction Indicator	22
Approach SAzimuth Indicator	23
Heliport Traffic Light	24
Low Intensity AWL	25

DATASHEET Perimeter Light

5" INSET LED-LIGHTS for Heliports: Semi Flush & Full Flush



The AST Series 5" Inset LED-Lights are designated as Visual Aids for Heliports or Helidecks on Land, offshore and on Vessels

FEATURES

- Optimized light output due to patented optics concept
- Fully compliant to ICAO Annex 14 Vol 2., FAA EB 87 and CAP 437
- Fully resistant against intrusion of liquids, dusts and mechanical shocks due to sealed optics and electronics
- No fogging
- CE Certified
- Compact and low propulsion
- Optimized for integration in elevated Helipads
- Safety Extra Low Voltage compliant
- Enhanced surge current protection
- Corrosion resistant anodized Aluminum-housing
- NVG Option available

Ordering code:

Semiflush Inset Light:

- AST.TLOF-SF-24-G.....Perimeter Light 24 VDC, Green
- AST.TLOF-SF-24-G-NVGPerimeter Light 24 VDC Green/IR
- AST.FATO-SF-24-W.....FATO Light 24 VDC, White
- AST.FATO-SF-24-W-NVG..... FATO Light 24 VDC White/IR
- AST.ADI-SF-24-W.....Flight Path Alignment 24 VDC, White
- AST.ADI-SF-24-W-NVG.....Flight Path Alignment 24 VDC, White/IR

Full Flush Inset Light

- AST.TLOF-FF-24-GPerimeter Light 24 VDC Green
- AST.TLOF-FF-24-G-NVG.....Perimeter Light 24VDC Green/IR
- AST.FATO-FF-24-GFATO Light 24 VDC White
- AST.FATO-FF-24-G-NVGFATO Light 24 VDC White/IR
- AST.ADI-SF-24-W.....Flight Path Alignment 24 VDC, White
- AST.ADI-SF-24-W-NVG.....Flight Path Alignment 24 VDC, White/IR

In compliance with

- ICAO Annex 14 Vol 2. Heliports, 4. Edition
- ICAO Annex 14 Vol 1. Aerodrome Design and Operation
- ICAO DOC 9261 Heliport Manual
- ICAO DOC 9157 Aerodrome Design Manual Part 4 (Visual Aids)
- EASA CS HDR DSN
- FAA AC 150/5345-46E Specification for Runway and Taxiway Light Fixtures
- FAA AC 150/5390-2C Heliport Design
- FAA Engineering Brief 87 Heliport Perimeter Light for Visual Metrological Conditions
- FAA Engineering Brief 67D Light Sources others than Incandescent and Xenon
- CAA CAP 437 Standards for O'shore Helicopter Landing Areas
- CASA CAAP 92-2 Guidelines for the establishment and operation of onshore Helicopter Landing Sites
- IEC TS 61827 Electrical Installations for Lighting and Beaconing of Aerodrome

TECHNICAL DATA

Operatring Voltage:	24 VDC or 6,6A
Dimming:	0-100%
W/NVG option	IR continous on
InfraRED (NVG option)	240mW @ 850 nm
Usefull Lifetime	>100.000 hour
Operating Temp	-40°C to +55°C
Protection Class	IP 68
Storage Temperatur	-40°C to +85°C
weight	0,65 Kg
Package dimension	190x090x160 mm
Package weight	0,9 Kg

LIGHT DISTRIBUTION

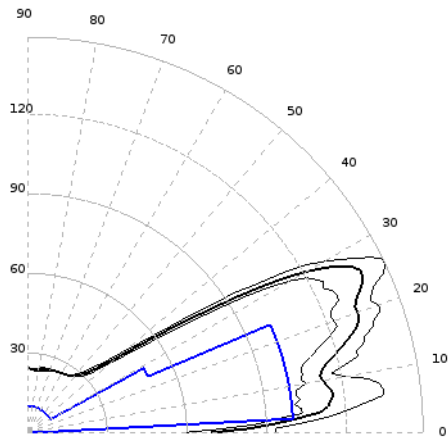


Figure 1: Light distribution FATO (white) ICAO

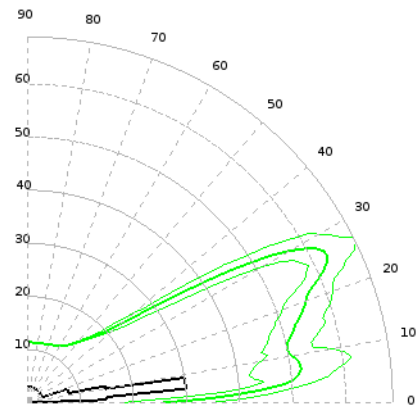


Figure 2: Light distribution TLOF (green) ICAO

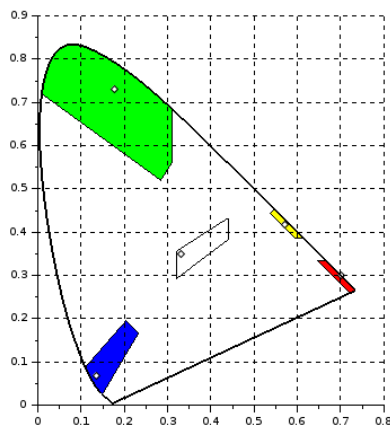
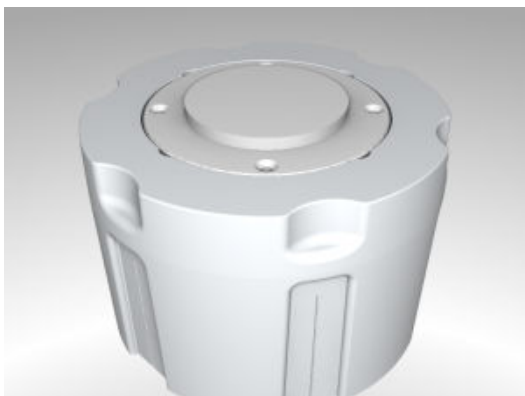


Figure 3: Color Coordinates



Shallow Base



5" to 8" Adapting
Option:Heating

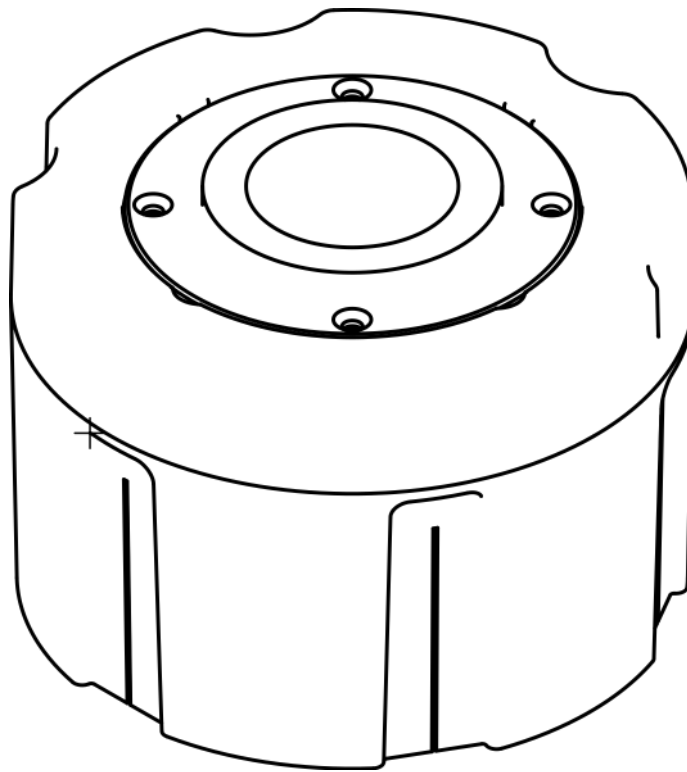


Figure 1: AST-SB with AST Inset Light

The AST Series Shallow Base is designated for the installation of AST 5" inset LED Perimeter Lights.

Referred Standards

- FAA AC 150/5345-46E Specification for Runway and Taxiway Light Fixture
- IEC TS 61827 Electrical installations for lighting and beaconing of aerodromes

FEATURES

- Corrosion resistant Aluminum die-cast housing
- Optimized dimensions for minimum coring diameter and depth with optimized volume for comfortable handling of connectors, installation and placement of joints and terminators
- Water and dust proof

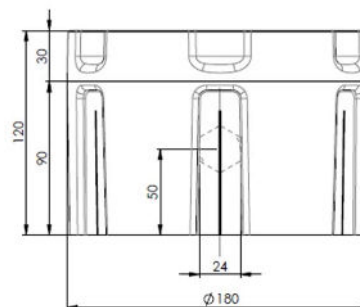
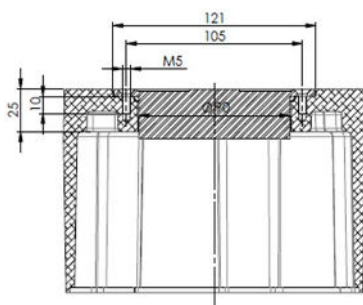
TECHNICAL DATA

Function	Value
Outer \varnothing :	180 mm (suitable for 200 - 220mm core holes)
Over all depth:	120 mm
Inner \varnothing	140 mm
Inner depth	92mm
Bearing strength:	8.15 t
Protection class	IP68 (with appropriate installed light AST series)

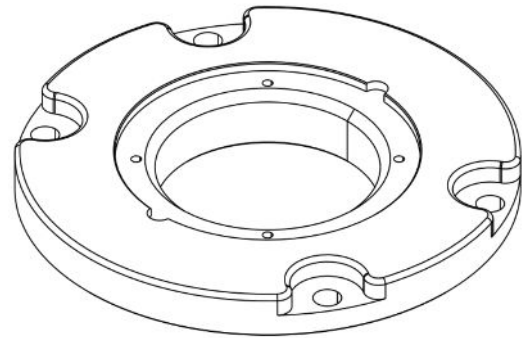
VARIANTS

Variant	Description
AST-SB-HEL-0	Bottom hole \varnothing 77mm for Pipes and Ducts DN75 (Outer \varnothing 76mm) according to IEC/EN 61834-24 - No Cable Glands
AST-SB-HEL-1	Bottom hole \varnothing 77mm for Pipes and Ducts DN75 (Outer \varnothing 76mm) according to IEC/EN 61834-24 - 1 Cable Glands M20x1,5
AST-SB-HEL-2	Bottom hole \varnothing 77mm for Pipes and Ducts DN75 (Outer \varnothing 76mm) according to IEC/EN 61834-24 - 2 Cable Glands M20x1,5

DIMENSIONS



5"-8" Adaptor Ring, with or without deicing/heating



- Compatible with AST 5" LED Inset Lights Flush fit into 8" shallow base
- Watertight due to radial sealing
- Integrated electrical deicing kit optional available
- High bearing strength
- Low maintenance effort with recommended mounting concept

Design Concept

- Accroding IEC 61827
- Corrosion resistant material
- Easy installation

Product Specifications

Mechanical Data

Height	Total / Above Surface	28.5mm / 0mm
Installation Diameter	Outer / Mid / Inner	Ø203mm / Ø90mm / Ø122mm
Bearing Strength	11t	
Weight	2.6kg	
Packing Dimensions	220 x 220 x 35mm	
Gross Weight	3.0kg	
Material	Adaptor Ring	Aluminium
	Sealing	EPDM
Recommended Mounting	5" LED Inset Light	4x M5x10mm
	Adaptor Ring	4x M10x30mm (MagentaLock Safety Bolts)

Referred Standards

The 5-8" Adaptor Ring complies with the following industry regulations:

- FAA AC 150/5345-46E Specification for Runway and Taxiway Light Fixture/ 2016
- IEC TS 61827 Electrical installations for lighting and beaconing of aerodromes/ 2014

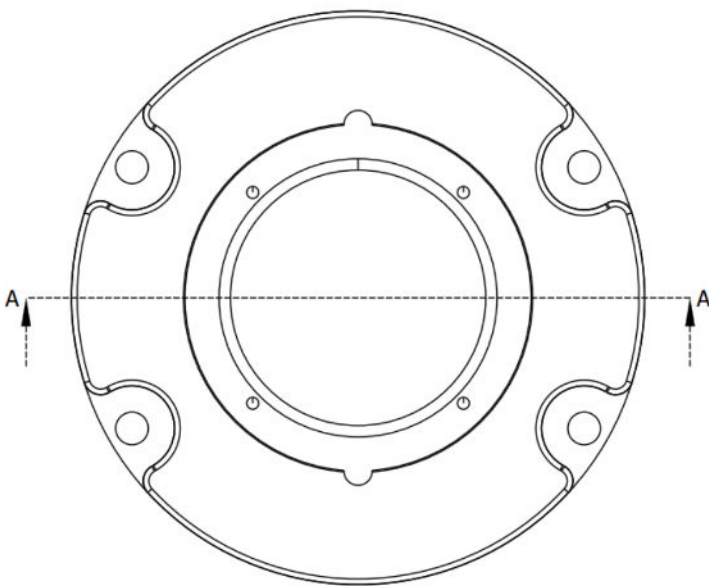
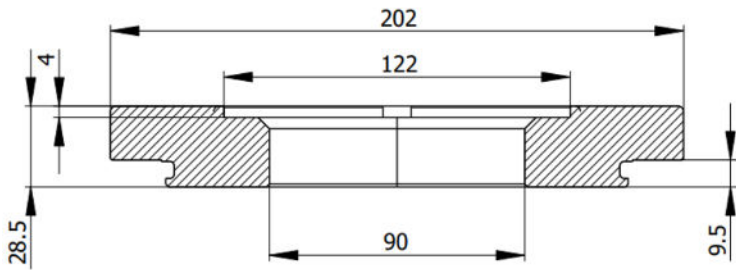
Product Specifications

Electrical Data

Accessories

AST 5" LED Inset Light

Dimensions



Ordering code:

AST.AR-85

AST.AR-85-HEAT (with deicing)

DESCRIPTION

The elevated TLOF beacon is a green-colored light equipped with LED technology.

It is dedicated to the illumination of the Touch-Down and Lift-Off area of a helipad and complies with the international rules of ICAO (International Civil Aviation Organization).

In option, infrared and dimming versions are available.

ADVANTAGES

- Long lifetime > 10 years
- Optimized light output due to patented optics concept
- Infrared option
- Dimming option
- Power supply: 24V DC, 230V AC
- Remote control
- 2-year warranty

MODELES



REFERENCE	COLOR	USAGE	VERSION	VOLTAGE
AST.TLOF-G-EL-24	Green	TLOF Perimeter	Classic	24V 230V
AST.TLOF-G-EL-24- NVG	Green	TLOF Perimeter (NVG)	Infrared	24V 230V

CHARACTERISTICS

LUMINOUS

Luminous source
Color
Horizontal beam spread
Vertical beam spread
Luminous intensity
Mean time before failure

LEDS
 Green (steady)
 Green (steady) + IR (in option)
 360°
 3°
 30 Cd
 100.000 heures

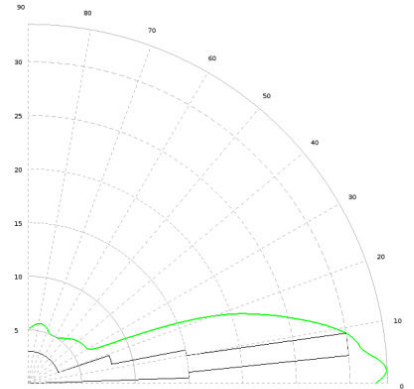


Figure 3: Light distribution TLOF (green) ICAO

ELECTRICAL

Voltage
Consumption
Functioning temperature
Protection class

24V DC / 230V AC
 6W (without IR)
 6,5W (with IR)
 -40°C to +55°C
 IP68

MECHANICAL

Body material
Body of the light element material
Lens material
Dimensions
Weight

Aluminium (painted yellow)
 Anodized aluminium
 Resin
 160 x 62mm
 < 1 kg

ENVIRONNEMENT

Humidity
Gel
Wind speed

100%
 -60°C
 240 Km/h

CERTIFICATIONS AND HOMOLOGATIONS

CE
OACI Quality
FAA
CAP

EN60947-1
 CEI60364, NF C15-100
 2014 / 35 / UE
 Annex 14, Volume II, Chapter 5
 ISO 9001; 2015
 FAA EB 87 (compliant)
 CAP 437 (compliant)

WARRANTY

Warranty period

2 years

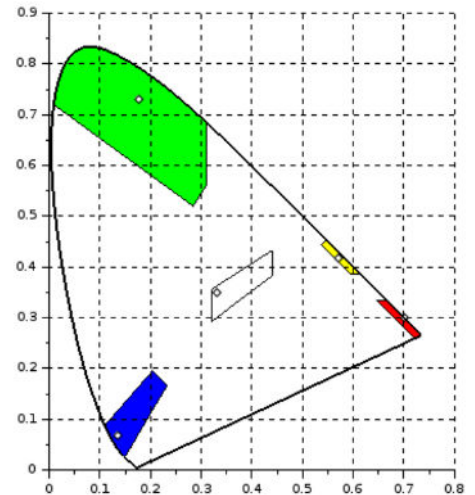


Figure 4: Color Space

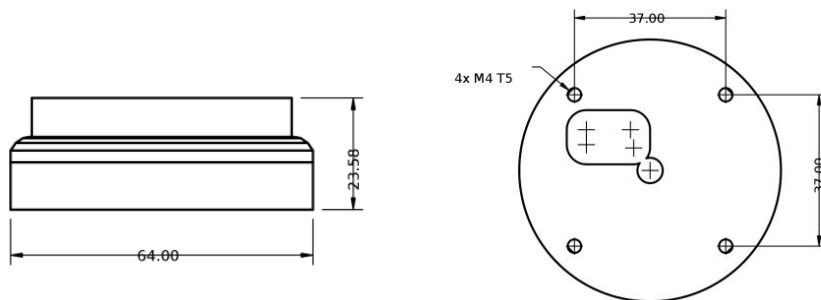
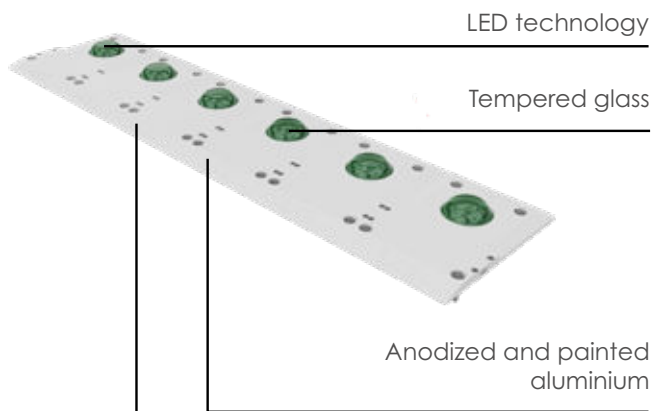


Figure 5: Dimensions

H MARKING LIGHTING

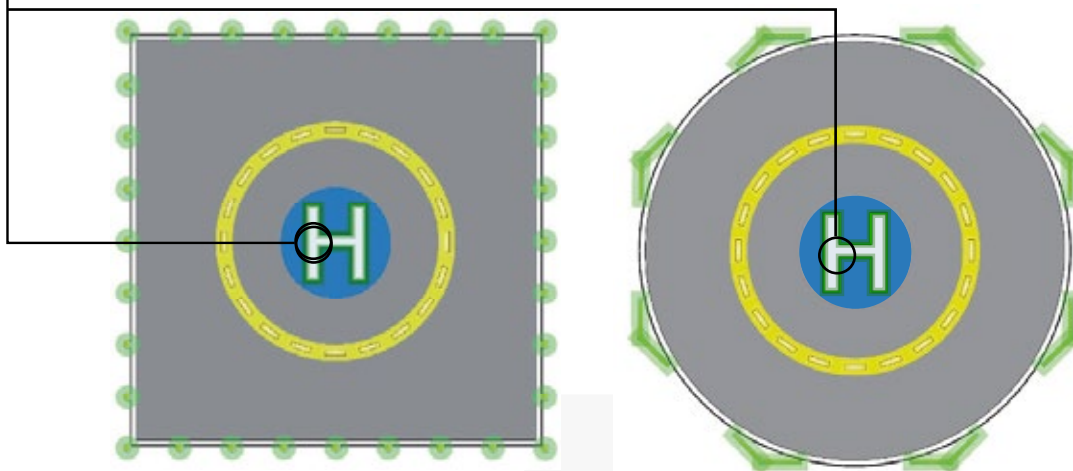


The H Marking Lighting marks the perimeter of the H symbol that is central in the TDPC area. The beacon is vehicle-accessible and suitable both for surface and elevated areas.

- Steady GREEN light
- Life time longer than 10 years
- Low consumption
- Stabilised light output
- Light-weight and compact structure
- Easy to install
- No RF-radiations
- IR version available



INSTALLATION MAPS



CAPTION

○ CRH-LXS

The quantity of the required-by-regulation beacons is closely connected with the to-be-illuminated symbol dimensions.

CERTIFICATION



COMPLIANCE



FEATURES



H MARKING LIGHTING TECHNICAL SPECIFICATIONS

OPTICAL FEATURES

- Horizontal beam radiation: 360°
- PMMA and tempered glass lens

ELEVATION	LUMINOUS INTENSITY [cd]	
	Min	Max
2° to 12°	3.5	60
> 12° to 20°	0.5	30
> 20° to 90°	0.2	10

-180° Azimuth +180°

MECHANICAL FEATURES

- Anodised and painted aluminium body
- EPDM o-ring
- Degree of protection: IP68
- Operating temperature: -20°C to +50°C
- Provided with Luxsolar standard cable 30cm
- Elevation: <25mm
- Tempered glass resistant up to 5000kg load

ELECTRICAL FEATURES

- Powered by AST control panel:
 - 12/24 or 48 VDC or 115/230 VAC incoming power
 - 24 VDC outgoing power to the beacons
- Power consumption: 2W @24 VDC each element
- Adjustable light intensity: 10% - 30% - 100%
- Failures monitoring

OPTIONS

- IR Wavelength: 850nm, compatible with pilot's NVG
- Available in 1,2,4,5 modules configuration

CERTIFICATIONS

- CE

COMPLIANCE

- ICAO Aerodromes - Annex 14 Volume 2, Heliports
- EASA CS-HPT-DSN
- EASA PTS-VPT-DSN
- CAA CAP1264

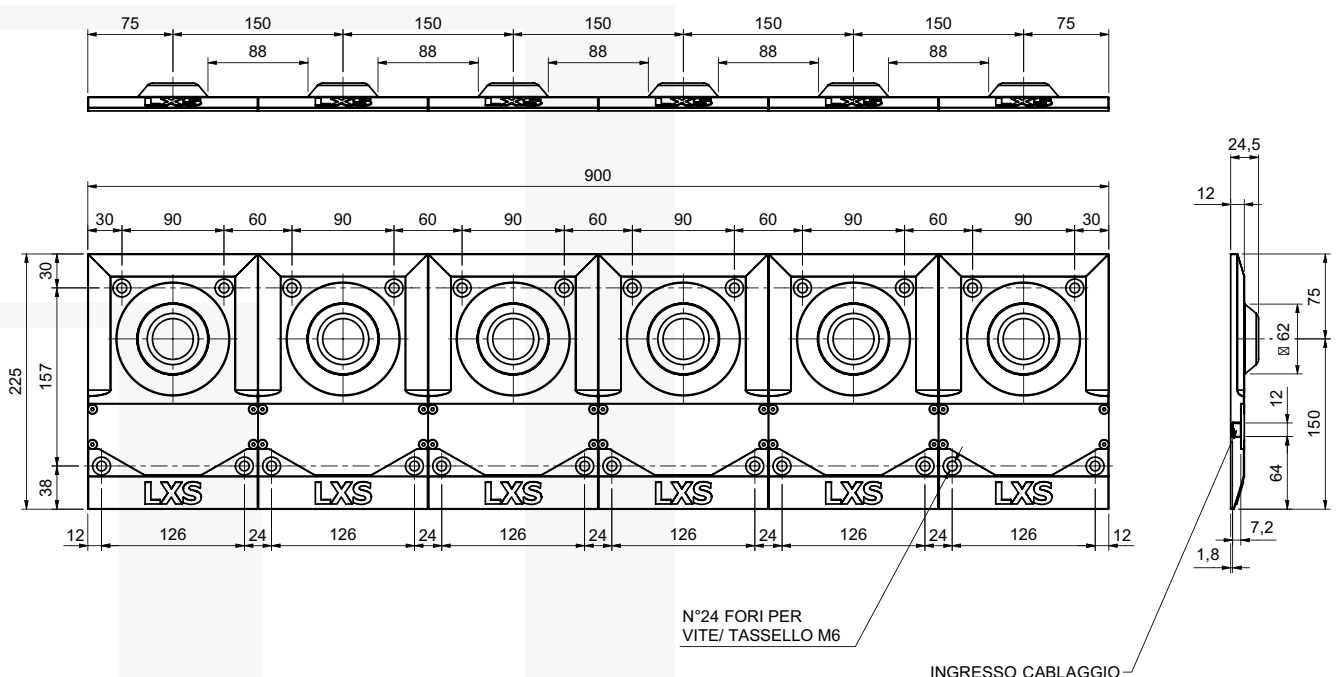
ORDER CODE

AST.CRH-LXS-6*

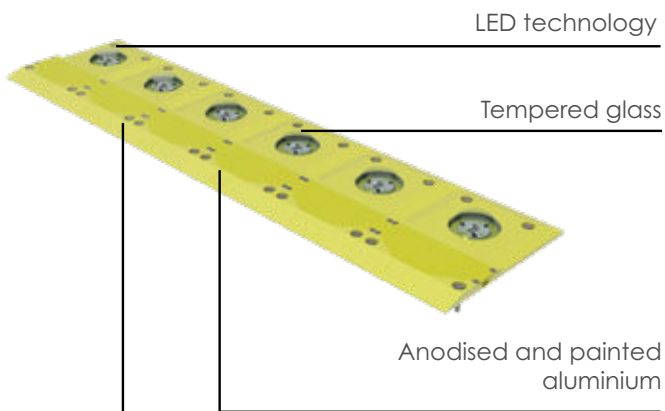
AST.CRH-LXS-3*

The last code number refers to the possible modules quantity configurations

TECHNICAL DRAWINGS



TDPC LIGHTING AST.ASPSL-TDPC

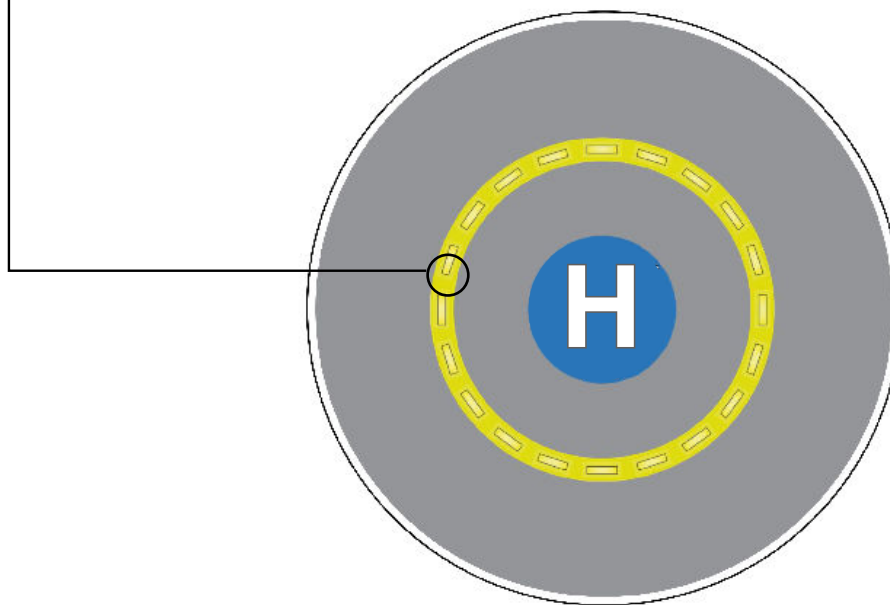


It marks the TDPC area circumference. The beacon is vehicle-accessible and suitable both for surface and elevated areas.

- Steady AMBER light
- Life time longer than 10 years
- Low consumption
- Stabilised light output
- Light-weight and compact body
- Easy to install
- No RF-radiations
- LED IR version available



INSTALLATION MAPS



CAPTION

● ASPSL-LXS

Typical quantity of beacons to be installed is 16. For custom solutions (non-standard helipad dimensions) quantity of beacons shall be calculated.

CERTIFICATION



COMPLIANCE



FEATURES



TDPC LIGHTING TECHNICAL SPECIFICATIONS

OPTICAL FEATURES

- Horizontal beam radiation: 360°
- PMMA and tempered glass lens

ELEVATION	LUMINOUS INTENSITY [cd]	
	Min	Max
0° to 10°	11	60
> 10° to 20°	2,75	40
> 20° to 90°	0,55	15

-180° Azimuth +180°

MECHANICAL FEATURES

- Anodised and painted aluminium body
- EPDM o-ring
- Degree of protection: IP66, IP68
- Operating temperature: -20°C to +50°C
- Provided with Luxsolar standard cable 30cm
- Elevation: <25mm
- Tempered glass resistant up to 5000kg load

ELECTRICAL FEATURES

- Powered by LXS control panel:
 - 12/24 or 48 VDC or 115/230 VAC incoming power
 - 24 VDC outgoing power to the beacons
- Power consumption: 2W @24 VDC each element
- Adjustable light intensity: 10% - 30% - 100%
- Failures monitoring

OPTIONS

- IR Wavelength: 850nm, compatible with pilot's NVG

CERTIFICATIONS

- CE

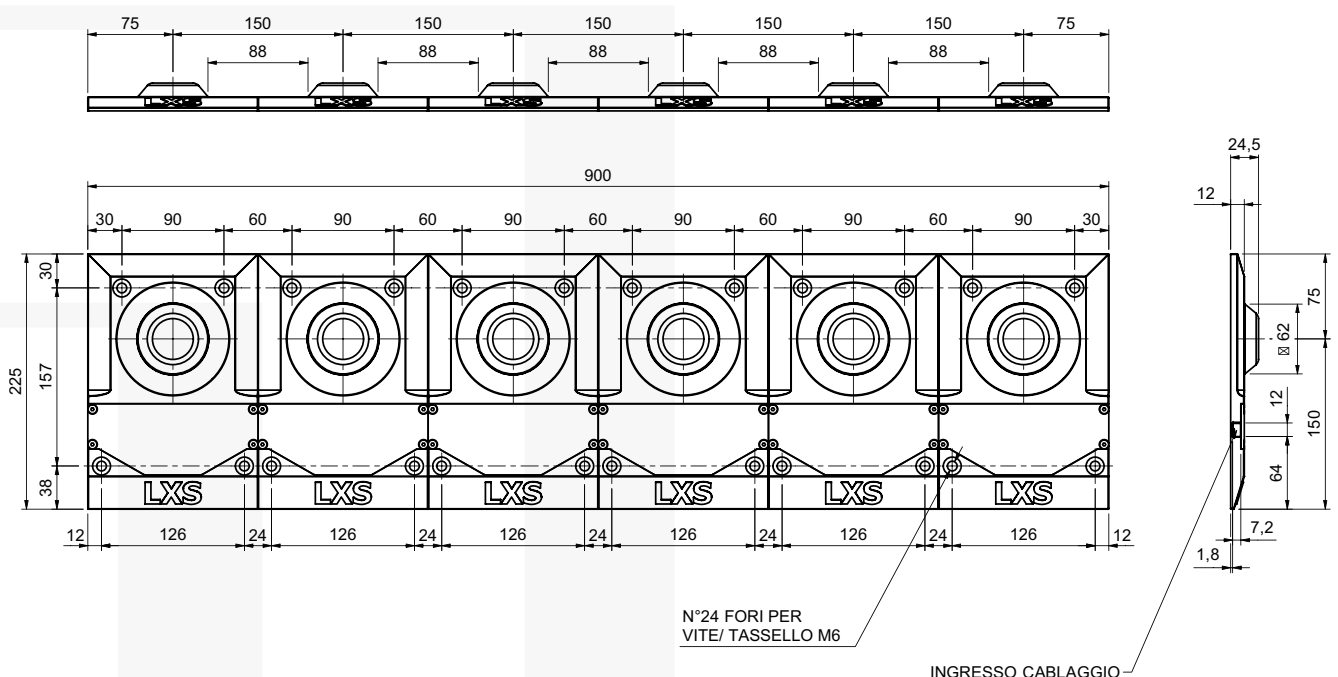
COMPLIANCE

- ICAO Aerodromes- Annex 14, Volume 2, Heliports
- EASA CS-HPT-DSN
- EASA PTS-VPT-DSN
- CAA CAP126

ORDER CODE

AST.ASPSL-TDPC

TECHNICAL DRAWING





DESCRIPTION

- Light and compact design: < 2.5 kg
- Suitable for temporary lighting of TLOF area
- Long lifetime LED technology
- Optimized light output due to patented optics concept
- Yellow box provided with 4 holes for permanent fixation

Models

Reference	Voltage	Battery	Autonomyh
AST.BPM-TLOF-G	24 VDC	2 x 12V 1,2Ah	up to 12 hours
AST.BPMCHARG	Charge up to 8 lights		

Characteristics

Luminous Source	Geen LED
MTBF	100.000.hours

Electrical

Voltage	24 VDC
Consumption	< 6W
Battery	2 x 12V 1,2Ah AGM
Authonomu	Up to 12 hours

Mechanical

Height/Widthrh	102 mm / 150 mm
Protection Class	IP68

Environmental

Humidity	100%
Temp:	-60 / +50°C

Certifications

Certifications	CE60947-1, CE160364, NF C15-100, 2014/35/UE
ICAO	Annex 14, Volume 2, chpter 5
Quality	ISO 9001, 2015



AST-RESCUE

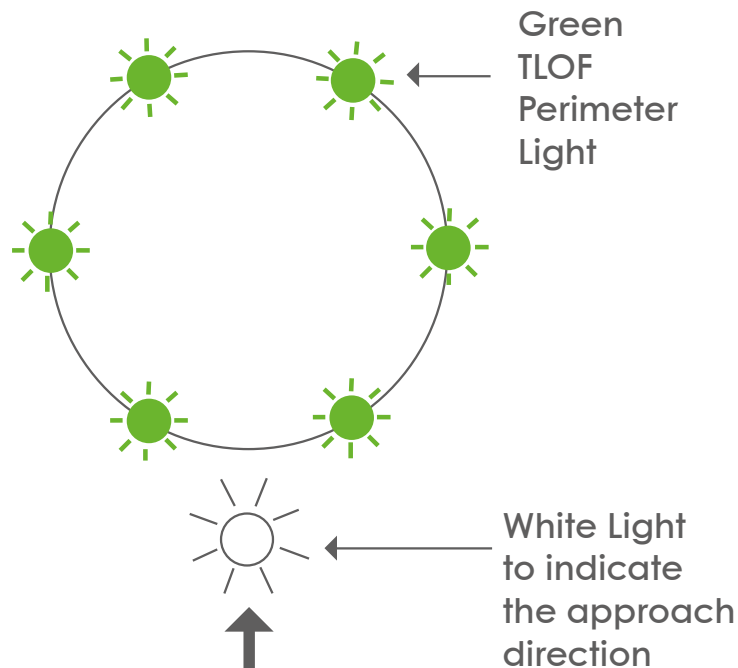


During emergencies, helipads where night operations are authorized become a crucial infrastructure. To cope with this need, Luxsolar R&D team has developed a portable lighting system.

Such lights create a temporary helipad perimeter landing area, allowing helicopters to operate safely.

AST-Rescue is a versatile product: it can be used in several situations and operated by non-technical personnel, such as police force, emergency and rescue teams, highways employers, service areas employers, etc.

SUGGESTED CONFIGURATION



COMPLIANCE



FEATURES



TECHNICAL SPECIFICATIONS

OPTICAL FEATURES

- Horizontal beam radiation: 360°
- PC lenses
- FATO perimeter light (white)

Elevation (E)	Luminous Intensity [cd]
30°	10
20°	50
20°	100
10°	
3°	
0°	10

-180° Azimuth +180°

- TLOF perimeter light (green)

Elevation (E)	Luminous Intensity [cd]
20° < E ≤ 90°	3
13° < E ≤ 20°	8
10° < E ≤ 13°	15
5° < E ≤ 10°	30
2° < E ≤ 5°	15

-180° Azimuth +180°

MECHANICAL FEATURES

- Light body: GRP
- NBR O-RING
- Degree of protection: IP68
- Operating temperature: -30°C to +60°C
- Light weight: 1Kg approx
- Trolley housing body: PP + Nylon
- System total weight < 20kg

ELECTRICAL FEATURES

- Light power supply: battery LI-ION
- Wireless recharging system
- Housing power supply: 115/230 Vac through dedicated cable
- Light intensity adjustable: 50% - 100%
- Autonomy: up to 100 hours
- Twilight sensor
- Switch for on/off and adjust light intensity

OPTIONS

- IR Wavelength: 850nm, compatible with pilot's NVG
- 7 lights system or 9 lights system
- Lights available in 5 colors:
 - ● Green light
 - ○ White light
 - ● Red light
 - ● Yellow light
 - ● Blue light

COMPLIANCE

- ICAO Aerodromes- Annex 14, Volume 2, Heliports
- EASA CS-HPT-DSN
- Trolley: STANAG, DEF STAN and NATO approved

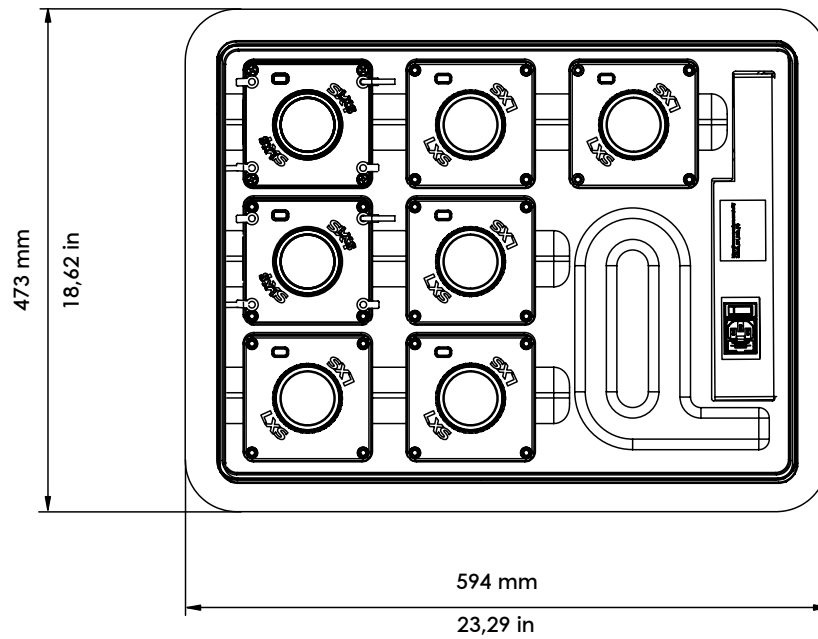
ORDER NO:

AST-RESCUE-7

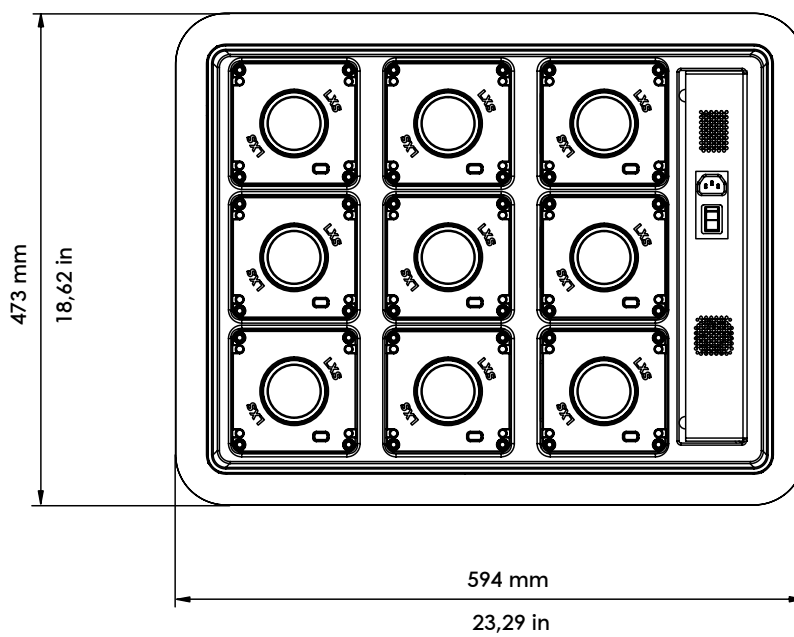
AST-RESCUE-9

TECHNICAL DRAWING

7 LIGHTS VERSION

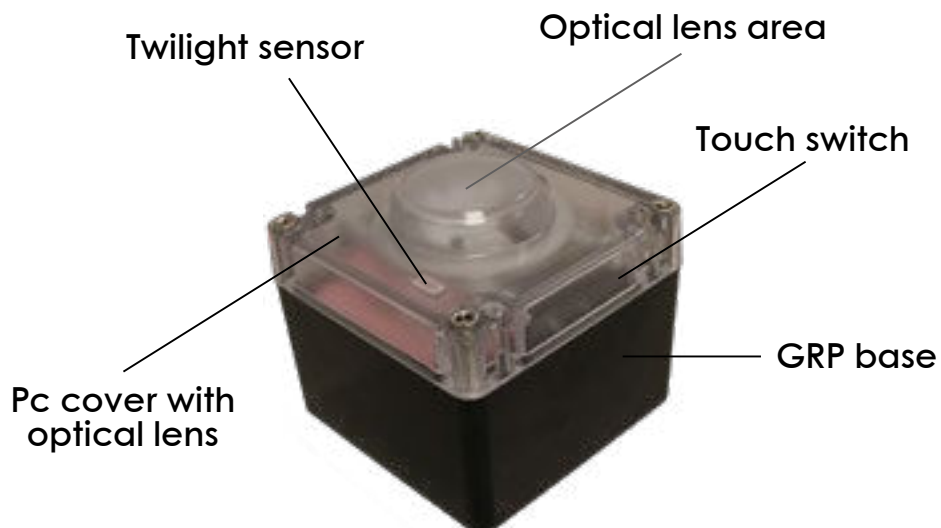


9 LIGHTS VERSION



TECHNICAL DRAWING

SINGLE LIGHTING ELEMENT



TROLLEY



DESCRIPTION

The **WHITE FLOODLIGHT** is a light of 10.000 cd intensity with multi-LEDs technology, developed with an aluminum design for a natural fresh cooling system. It has been designed for an easy installation.

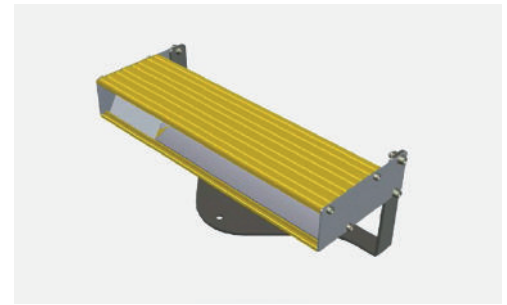
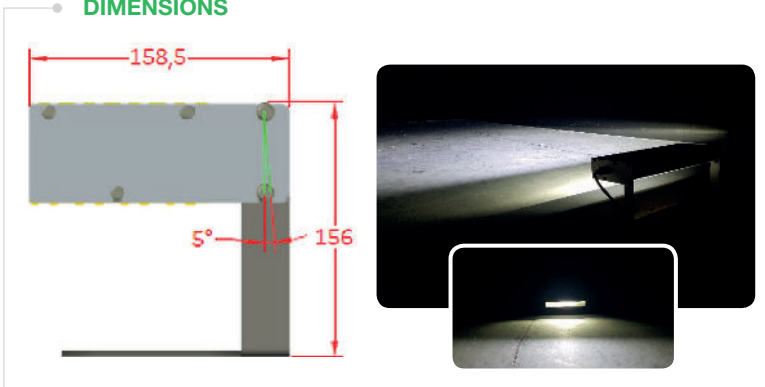
ADVANTAGES

- Lifetime >10 years
- Multi – LEDs
- Reflector for beam optimization
- Shortened time of installation
- No maintenance
- 2-year warranty
- Integrated radiator for a natural cooling
- One single bloc, with electronics embedded
- Protection Class: IP66
- Frangible

MODELS

REFERENCE	VOLTAGE	
AST.FLOOD-D-LED	110-240V	

DIMENSIONS



CHARACTERISTICS

LUMINOUS

Luminous Source	LEDs
Colour	White
MTBF	100 000 hours

ELECTRICAL

Tension	110-240V
Functioning Temperature	-55°C à +55°C
Consumption	< 17 Watts max
Protection Class	IP66

MECHANICAL

Body lamp material	Aluminium
Lens Material	Glass
Fixation	M8 screw – On ground
Height	156 mm
Width	158.5 mm
Weight	< 3 Kg

ENVIRONMENTAL

Humidity	100%
Frost	-60°C
Wind Speed	240 Km/h

CERTIFICATIONS

CE	EN60947-1 CEI60364, NF C15-100 2014 / 35 / UE
Quality	ISO 9001 ; 2015

WARRANTY

Warranty period	2 years
-----------------	---------

OPTIONS

Solar Power Supply	<input checked="" type="checkbox"/>
--------------------	-------------------------------------

PRODUCT DATASHEET

FLOODLIGHT 50 W | With heating function



AREAS OF APPLICATION

- Heliport Flood Light
- Outdoor use (IP68)
- Marine Light
- Deck Work Light
- Deck Flood Light
- Building facades

PRODUCT FEATURES

- Power: 50W, 5pcs OSRAM 10W LED chips
- Luminous flux: 4500LM
- Voltage range:9-32V DC
- Waterproof rate:IP68
- PC lens
- Material of housing: aluminum alloy
- LED lifetime:30000 hours
- Shock 60G
- Operating temperature:-45/+85°C
- Beam : Flood / Spot beam

ORDERING CODE

AST.OW-0407-50W





CHARACTERISTICS

LUMINOUS	
Luminous source	White flash LEDS
Horizontal beam spread	360°
Vertical beam spread	0° to 10°
Luminous Intensity	> 1 700 Cd at 0° > 2 500 Cd between 1,5° & 2,5° > 1 700 Cd between 3° & 4° > 750 Cd between 5° & 7° > 250 Cd between 8° et 10°
Flash frequency	Morse H Code
MTBF	100 000 hours
ELECTRICAL	
Voltage	240V AC / 50 Hertz
Operating temperature	-55°C to +55°C
Current I _{max}	In 230V: I < 500mA
Protection class	IP66
MECHANICAL	
Box material	Zamac
Body lamp material	Aluminum
Lens material	Polycarbonate
Mounting	M8 screw (in option)
Height / Width	410mm / 410mm
Weight	< 16 Kg
ENVIRONMENTAL	
Humidity	100%
Frost	-60°C
Wind speed	240 Km/h
CERTIFICATIONS	
CE	EN60947-1 CEI60364, NF C15-100 2014 / 35 / UE
OACI	Annex 14, Volume I, Chapter 5
Quality	ISO 9001 ; 2015
WARRANTY	
Warranty period	2 years

DESCRIPTION

The **AST-HB Beacon** is a heliport white light, mono-bloc, given LED technology. It offers significant advantages in terms of lifetime (100 000 hours), sturdiness and energy consumption. The ruling of the light can be achieved through a deported command system (UPS, control panel). The photocell for automatic night ignition and the dry contact are both in option. Our heliport beacon gives out series of 4 flashes, every 1.2 second (Morse H Code – in standard other code are possible). Its compact design facilitates its installation.

ADVANTAGES

- Lifetime > 10 years
- Multi-LEDs technology
- Low Consumption
- No Maintenance
- 2-year warranty
- Zamac box with epoxy paint
- Wiring on terminal block, cable gland output

APPLICATIONS

It is recommended to install a Morse Code Helipad Light on a Heliport: When visual guidance on a long distance is ruled necessary and when that visual guidance is not handled by other means. When it is difficult identifying the Helideck because of the surrounding lights.

The heliport light will be placed on the helipad or next to it, preferably on a lifted point in a way that the pilots are not dazzled at low distance.

MODELS

REFERENCE	VOLTAGE	PHOTOCELL	DRY CONTACT
AST.HB-H00MB	110-240V	Not included	Not included
AST.HB-H11MB	110-240V	Included	Included

DESCRIPTION

The AST.STNA WDI is our ICAO-compliant mast with integrated lighting.

This tilting mast is available in heights of 3 or 4 meters to the windssock center point.

The standard windsocks have a diameter of 60 or 90 cm, but other sizes are available upon request.

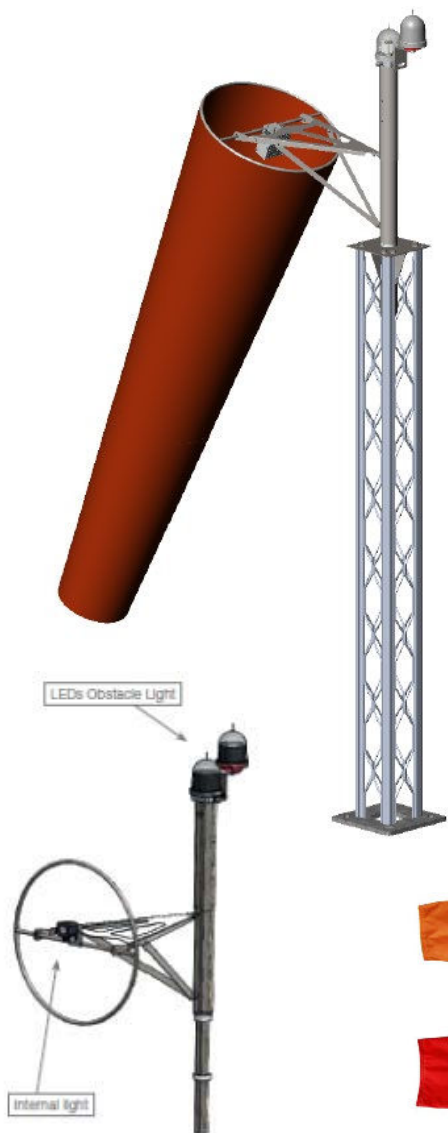
The windssock support is fitted with two self-lubricating Teflon rings, ensuring smooth rotation.

This system is highly resistant to wear and requires no maintenance, providing an exceptionally long service life.

The top section is manufactured from stainless steel, while the mast itself is made from AmpliSafe® material and available in yellow or red/white.

The mast is supplied with a tilting mechanism.

(Windssock must be ordered separately.)



Windssock		
Ordering Code:	size	Colour
AST.WS-AA	60/240 or 90/360 or Sp*	OR or R/W

Ordering Code:	WS Diameter	Height	Mast Colour	Power	Top Beacon
AST.WDI-	60 or 90 or Sp*	3** or 4 or 7	Y or R/W	230	R or IR
AST.WDI-	60 or 90 or Sp*	3** or 4 or 7	Y or R/W	48	R or IR
AST.WDI-	60 or 90 or Sp*	3** or 4 or 7	Y or R/W	SOL	R or IR
AST.WDI-	60 or 90 or Sp*	3** or 4 or 7	Y or R/W	6,6	R or IR

* - Specify through opening and length of Windssock. (Ex. 60x240 cm)

** - Only Ø60 cm Windssock available

Environment	
Operating Temp	-55°C to +55°C
Wind Speed	160 Km/h
Protection Class	IP66

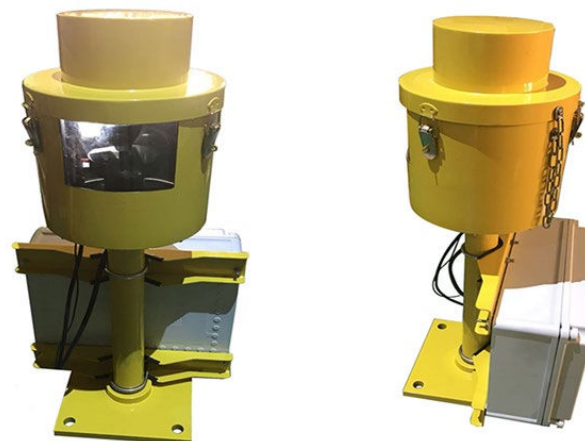
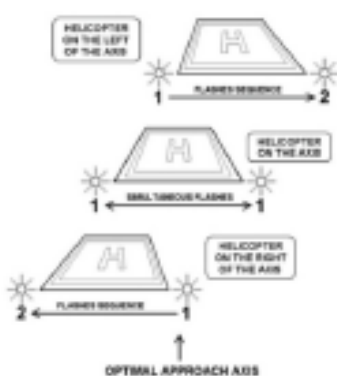
Certification	
CE	EN60947-1 CEI60364, N C15-100 2014 / 35 / EU
ICAO	Annex 14, Volume 1, Chapter 4
Qualirt	ISO 9001 : 2015

AirSea Approach Azimuth Guidance System

The AirSea SAGA (System of Azimuth Guidance for Approach) provides a combined signal of approach azimuth guidance and threshold

Item Name	Heliport AST. SAGA system (System of Azimuth Guidance for Approach)
Model No.	CM-HT12-SAGA
Lamp	One 12Vac 105W pre-focused halogen reflector lamp
Power Supply	110V-230Vac, 50-60Hz
Power Consumption	Less than 250W for the SAGA system and 240W maximum for the heating resistores
Visual Range	10 nautical miles in standard visibility conditions
Operation Angular Sector	15 Degrees on both side of approach axis
Axis Accuracy	+/- 0.45 degree in azimuth
Delay Between Flashes	From 60 to 300 ms
Flashes Frequency	0.5Hz
Material	Body,cap and support are in aluminium alloy,phosphated and painted in aviation yellow.All fixing sand fastenings are stainless steel.The power supply box is made of reinforced polyester.
Working temperature	From -40°C to +50°C
Remote CMS	Remote control from 48Vdc.Monitoring feed back signal using two dry contacts(contact capacity=250V/1A maximum).

It will comprise of 2 flashing units(master and slave) located symmetrically on both sides of the runway or TLOF for heliport threshold.



ORDERING CODE
AST.CM-HT12/SAGA

In compliance with:
ICAO: Annex14 Volume II Paragraph 5.3.4



LED traffic lights are an investment in the future

With the energy-saving and durable LED traffic lights of Avimars EPRO SYSTEMS, you invest in the latest technology. Because in the field of safety-relevant lighting technology not only the enormous reliability of the LEDs is of great importance. It also protects the environment and reduces energy and service costs. Thus, the triumphal procession of LED lighting technology does not stop at the traffic lights. In future, only the efficient and cost-effective LED traffic lights will surely be used.

Technical specifications

Version	LED light 12V		LED Light 24 V		LED Light 110 ~ 230 v	
Optional blinking module	without	with	without	with	without	with
Part No.	AVM.T-03-311-000	AVM.T-03-311-900	AVM.T-03-3121-000	AVM.T-03-3121-900	AVM.T-03-3181-000	AVM.T-03-3181-900
Power supply	10-14 VDC	10-14 VDC	20-28 VDC	20-28 VDC	85-264 VAC-50/60Hz	85-264 VAC-50/60Hz
Power consumption	4W	4W	5W	5W	11W	11W
Dimension	350 x 350 x 130 (330) mm					
Packing Dimension	52 x 39 x 19 cm					
LED Module	Ø 300 mm					
Color	RED					
Number of LEDs per module	168					
Lifespan LEDs	> 50.000 hours					
Operating temperature	-30 to +60 ° C					
Housing material	PC (Polycarbonat)					
Weight with packaging	App. 4,5 Kg, (3.4 kg net)					
Protection	IP 63					



LOW INTENSITY OBSTRUCTION LIGHT

Polycarbonate UV resistant dome

Stabilised light output: LIOL-A: >10cd
LIOL-B: >32cd
LIOL-E: >32cd

- ▶ Standard circuits or TWIN*
- ▶ Infrared version*

Based on LED technology
Red flashing light
Red steady burning light

Anti-condensation Gore-Tex valve

Anodised aluminium body with heat-sink pins

Polyurethane foam

LIOL Intensity

Type A >10cd, red steady burning
Type B >32cd, red steady burning
Type E >32cd, red flashing

GRP UV resistant box for electronic circuit

IP66



*as option

AirSea L810-LXS Low Intensity Obstruction Light is compliant to **ICAO** (Low Intensity - Type A or B), **FAA** (Type L-810), **ENAC** and **EASA** certified.

With a **low-weight** and **compact body**, high quality and **ultra-bright LEDs**, **optical reflector for an optimum beam spread**, AirSea LIOL-A/B product is **your best choice for an efficient, long life and reliable Aircraft Warning Obstacle Light**.

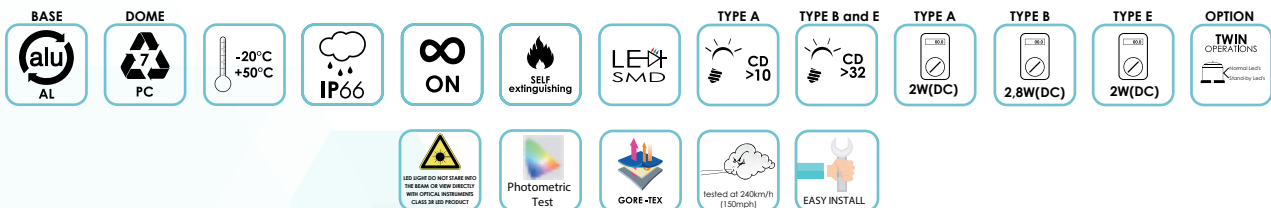
CERTIFICATION



COMPLIANCE



FEATURES



TYPICAL APPLICATION





For more information
Contact us for



AirSea Technology ApS

Moesgaardvej 14 • 8270 Hojbjerg • Denmark •

Ph. +45 5370 7475 • info@airseatech.dk

www.airseatech.dk